



2021

# Contents

The company 4 - 13

Product groups 14 - 31

Attachment parts 32 - 51

System requirements 52 - 65

Safety 66 - 75

Floors, walls and ceilings 76 - 109

Lighting 110 - 127

Patient comfort 128 - 137

Storage 138 - 145

Add-ons 146 - 153

Service 154 - 167

Highlights 168 - 169

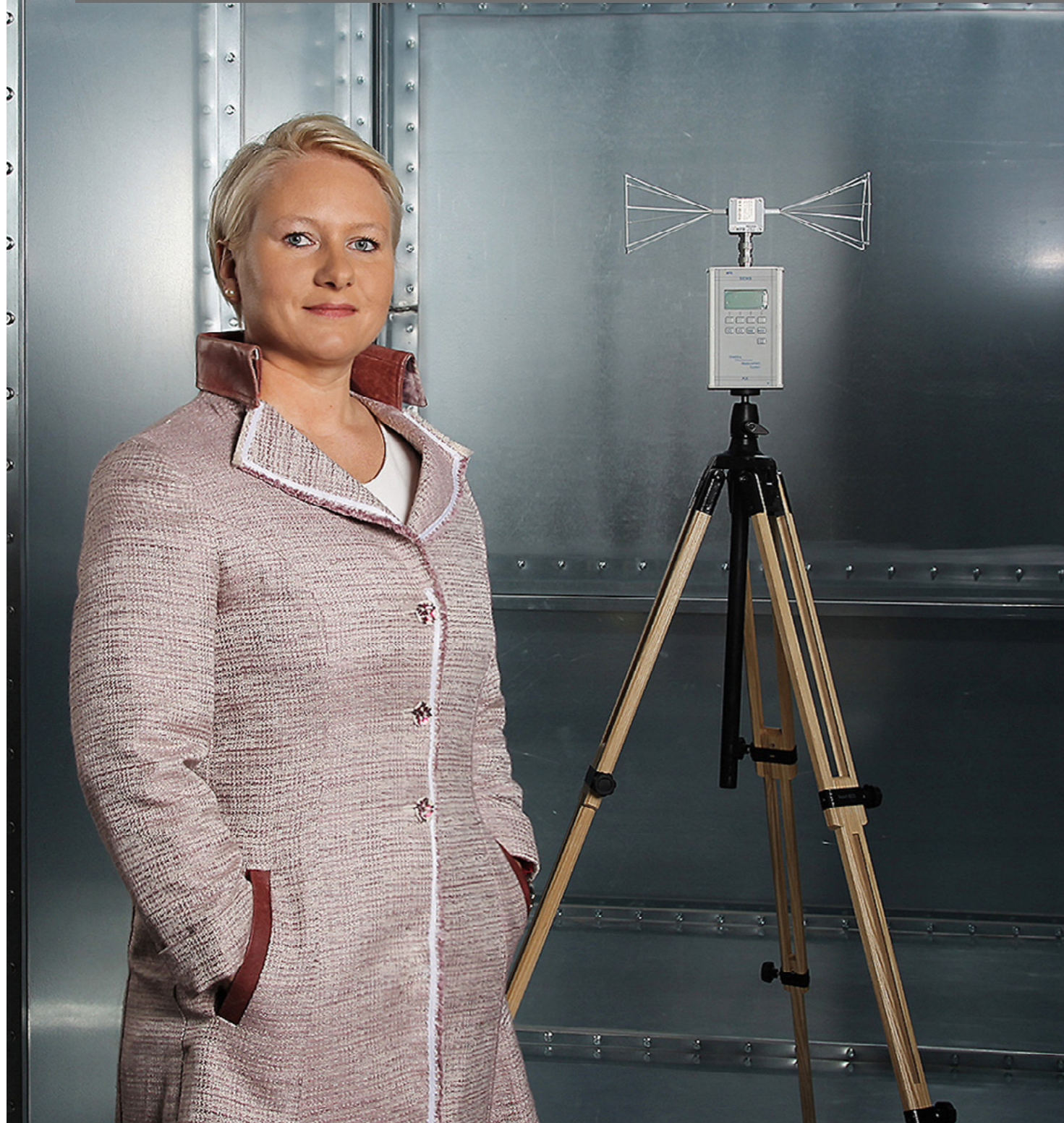
# The company

Foreword	<b>6</b>
The home of MRI	<b>8</b>
Made in Germany	<b>10</b>
Top in Europe	<b>12</b>

# Foreword

Interflex Medizintechnik

Our journey from start-up company to innovative partner in the healthcare sector



## What drives us

Interflex Medizintechnik has grown to be a major, innovative international cabin builder – and we aim to retain a leading position in the marketplace long-term.

Our employees and executives have jointly developed a mission statement which lays out our primary objectives and fundamental company principles.

## Our mission statement

### Consideration represents the core of our business activities

We always treat each other and other people with respect.

### Our customers form the focus of our operations

For us, 'client-oriented business activities' is not just a catchphrase. Every employee practices and models this concept in their day-to-day working environment.

### Sustainability

We say what we do and we do what we say.

### Our innovative services set new standards

We use our creativity to seek new solutions so that we can fulfil financial and quality requirements, whilst taking environmental protection and safety into account.

### Trust releases our full potential

We trust in the competence and performance of our employees, and encourage them to make responsible decisions and to act prudently.

### How we think as a team defines our work

We create space for both independent and cooperative work, and we shape decision processes together.

### We act on opportunities whilst remaining aware of our responsibilities

We have the courage to take on new things because we want to shape the future. We make entrepreneurial decisions, acting quickly and decisively. We view change as opportunity.

# The home of MRI

Innovative RF cabins



www.interflex-uhl.de

Manufacturer of shielding solutions for diagnostic imaging



## Passionate about MRI systems

Project-oriented business operations and flexibility characterise our working methods. Our experienced team always has an eye on the overview of the whole project. Our Customer Support Group (or CSG for short) and Project Manager coordinate all processes in advance as well as during the entire implementation phase, meaning we can provide transparency about plans at all times.

Our production department has four production lines and consistently maintains a high standard of quality. The metal, wood, electrics and custom builds production lines are responsible for the modular, ready-to-use Intercabin system. Our experienced fitters complete the construction of each Intercabin on time, conscientiously and accurately right down to the very last detail.

### Assuring and improving quality:

We are constantly developing our systems

in close collaboration with our customers.

We have a clear goal: to help shape the future of RF shielding technology.

As a team, our aim is to make patients feel as comfortable as possible in the Intercabin whilst providing doctors and medical staff with an optimum working environment.

### Experience is our advantage:

We offer long-term warranties because we are confident in our quality. So long as the Intercabin is inspected regularly, our customers possess a product which will run reliably for years to come.

The Intercabin by Interflex Medizintechnik is a shielding cabin which ensures the safe operating of modern magnetic resonance imaging systems. We focus on providing maximum operational convenience and functionality, as well as a comfortable environment for patients. Leading MRI machine manufacturers place their trust in our international experience and high-quality Intercabin RF cabins.



# Made in Germany

High quality and German precision



Getting here  
Interflex Medizintechnik



www.hfg-um.de

Our locations in the innovative region of Ulm



## Centre for planning and administration



Am Hochsträß 8, 89081 Ulm

Today, design agencies, architects, engineering offices and various design-oriented companies have set up in the former School of Design.

Interflex Medizintechnik selected this location for our Centre for planning and administration because it is so well interconnected, allowing us to exploit synergies to further develop innovations, functionality and design in medical technology.

## Centre for production and expertise



Im Lehrer Feld 9, 89081 Ulm

All of our products are manufactured in one place: our spacious, well-lit Centre for production and expertise. Interflex Medizintechnik produces the Intercabin in its entirety to the highest quality standards on the metal, wood, electrics and custom builds (doors and windows) production lines.

The planning, design and development departments as well as training and testing rooms are located in the adjacent office building, which offers 500 m<sup>2</sup> of space. The production area at this location totals over 2,000 m<sup>2</sup>.

# Top in Europe

Top in performance, design and innovation



Over 1,000 successful projects



## At home in Europe with a global presence

As a system manufacturer of RF cabins with over 1,000 installations under our belts, we have become one of the leading producers in Europe.

Our experienced and multilingual project managers and installation teams are to be found at focus points around Europe, so they are able to implement projects in different European countries within the shortest possible time.



# Product groups

IntercabinPLUS	16
IntercabinTURNKEY	18
InterCUBE	20
IntercabinONE	22
IntercabinFIT	24
IntercabinRAW	26
IntercabinCARGO	28
IntercabinCTS	30



# IntercabinPLUS

Function first, form will follow



IntercabinPLUS

Design defines the future



## IntercabinPLUS

Design defines the future and function comes first, form will follow. The IntercabinPLUS is a development on the tried-and-tested IntercabinTURNKEY. It features maximised RF attenuation properties of over 110 dB and sound insulation for  $\geq 55$  dB. All of this means that the cabin provides the best possible conditions to you to get the best from your examinations.

The innovative lighting concept creates a pleasant atmosphere for patients, substantially reducing any sense of trepidation regarding the examination.

The oversized monitoring window provides additional safety, and a flush-fitted LED strip acts as a visual indication of the invisible magnetic field on entering the IntercabinPLUS.

### QUICK QUOTE



Receive your individual quote here.

We will process your enquiry within 48 hours.

300

# IntercabinTURNKEY

Turnkey solution



IntercabinTURNKEY

A ready-to-fit product for radiologists



## IntercabinTURNKEY

The IntercabinTURNKEY is a modular, self-supporting shielding cabin for MRI scanners in the medical sector. It is also known as an RF (radio frequency-sealed) cabin.

The different modules can be supplied in 100 mm grids (walls/floors/ceilings). The IntercabinTURNKEY is used by private-practice radiologists, in hospitals and at universities for diagnostic testing and as an intraoperative system.

The shielding cabin is handed over completely ready for operation, hence the name IntercabinTURNKEY.

### QUICK QUOTE



Receive your individual quote here.

We will process your enquiry within 48 hours.

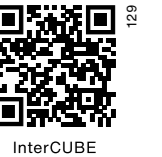
301

# InterCUBE

Modular building



BOKA Architektur



InterCUBE

Ready-to-fit radiology



## InterCUBE

Maximum flexibility. The InterCUBE is the cost-efficient and exceptionally flexible design solution, whether for temporary or long-term use. This modular building makes optimum use of the space with its especially clever floor plan. Yet the installation specifications remain completely manageable.

The preassembled modules simply have to be bolted together on-site, giving you a fully-equipped radiology facility as quick as can be.

### Further advantages:

The MRI system can easily be replaced if required; the InterCUBE is easy to extend or even completely relocate.

The InterCUBE was developed in a joint undertaking with our partner BOKA Architektur. From simple, two-part container construction right up to complex modular structures – we are able to implement every possible concept to suit your requirements.



# IntercabinONE

Stripped down design



IntercabinONE

All the necessities to operate an MRI system



## IntercabinONE

The IntercabinONE is our standard model. It is equipped only with the basic necessities. Here, any comfort features such as sound insulation or design components have been stripped back.

The modular room structure is basically suspended, i.e. it is not self-supporting. No extensions are available.

### QUICK QUOTE



Receive your individual quote here.

We will process your enquiry within 48 hours.

302

# IntercabinFIT

Conversion solution



IntercabinFIT

Ready-to-use conversion for machine upgrades or magnet exchange



## IntercabinFIT

The IntercabinFIT is a conversion solution for existing RF cabins. It does not matter who built the original cabin or what it is made from.

We measure up the cabin and create a detailed overview of all the conversion measures necessary, for example, to get the RF cabin ready for a new MRI system or to give it a general upgrade.

Whether you need RF doors, sound insulation, air-conditioning technology or electrics – we examine all components very carefully and then carry out maintenance, repair or replacement. The result is an almost-new Intercabin.

Fit for future requirements.  
IntercabinFIT – the conversion solution.

### QUICK QUOTE



Receive your individual quote here.

We will process your enquiry within 48 hours.

303

# IntercabinRAW

Extension cabin



IntercabinRAW

For tailored extensions designed by architects



## IntercabinRAW

The IntercabinRAW is the version of the Intercabin that you can develop and adapt at your end.

With the IntercabinRAW, you receive the most important components for MRI shielding. Interflex Medizintechnik supplies the modules, sets them up them professionally and hands over the installation complete with a measurement report.

We also we provide you with instruction and all the specifications you need to comply with. After that, you can further develop and adapt the RF cabin using your preferred providers.

We view the IntercabinRAW as a shell cabin structure; it is RF-sealed and only requires interior fittings, which is why we have designated it the IntercabinRAW – the cabin you can develop and adapt.

### QUICK QUOTE



Receive your individual quote here.

We will process your enquiry within 48 hours.

304

# IntercabinCARGO

Package cabin



IntercabinCARGO

Inexpensive self-assembly by trained personnel



## IntercabinCARGO

The IntercabinCARGO is a special service and logistics solution. We package all the modules and components you require to build an RF cabin (with or without interior fittings) including the assembly instructions. You can then order the cabin ex works or have us deliver it ready for assembly by your local providers on-site.

From Interflex Medizintechnik, we can even see the Deutsche Umschlaggesellschaft Schiene-Strasse (German Society for Rail-Road Transfer, DUSS) so we are very close to the transfer terminal.

Whether sea freight, air freight or overland transport, we are able to offer you a tailored logistics solution. This concept has been especially developed as an inexpensive alternative, for example should you wish to operate a second-hand MRI system or use a German, high-quality product in countries where labour costs are substantially lower than they are in Germany.

Depending on the logistics system used, the IntercabinCARGO is handed over to you packaged up, which is why we call it the IntercabinCARGO – the package cabin.

### QUICK QUOTE



Receive your individual quote here.

We will process your enquiry within 48 hours.

305

# IntercabinCTS

CT solution



IntercabinCTS

Spatial solution for rooms with lead shielding



## IntercabinCTS

Interflex Medizintechnik also offers solutions for computer tomographs. A wall cladding system made from sandwich panels with a lead core, the appropriate lead glazing and doors made from lead provide ideal protection and your X-ray and MRI rooms will match.

All Intercabin modules and design elements can also be used here. The advantage: you receive both solutions from a single source – from planning to implementation. This saves time and reduces costs.

For this reason, we are proud to name our new solution the IntercabinCTS.



# Attachment parts

RF windows	<b>34</b>
RF doors	<b>36</b>
RF doors, pneumatic	<b>38</b>
RF doors, fully automatic	<b>40</b>
RF doors, glass	<b>42</b>
RF double doors	<b>44</b>
RF sliding doors	<b>46</b>
PeDIP	<b>48</b>
RF door maintenance	<b>50</b>

# RF windows

Maintaining transparency



Design details



Technical details

Design and quality – the symbol of high-quality engineering skills



## RF windows

Allow yourself the opportunity to look in and patients the opportunity to look out with our unique, flush-fitted RF windows for your Intercabin. Whether as a patient observation window, skylight window, longitudinal or horizontal daylight windows; round, square or rectangular – all RF windows fulfil the highest demands for sound insulation and shielding attenuation.

Our design and quality requirements set the standards. The RF window frames are manufactured in stainless steel. The glass package consists of several single panes and insulating glass panes complete with an offset copper mesh insert. All RF windows feature a flush-fitting, interior-mounted pane (not single-part on the WE 1 standard wall partition, not with plastic cover on the IntercabinONE, not available with IntercabinRAW).

### Available dimensions:

Dimensions (WxH)	Order designation
1,200 x 900 mm	RF window, standard
1,500 x 1,000 mm	RF window, large
1,800 x 1,200 mm	RF window, panorama large
2,000 x 1,200 mm	RF window, panorama long

995 mm diameter RF porthole window

Round or oval windows, all shapes possible. Custom sizes available on request.



# RF doors

Design and quality



Design details



Technical details



Video

## Our core competencies at Interflex Medizintechnik



## Single-leaf, hinged RF door

Step inside to choose the right door design. We offer a large selection of doors for the Intercabin which are available for immediate dispatch. All meet the highest standards for sound insulation, shielding attenuation and convenience of operation.

### Technical description:

**Single-leaf, hinged RF door;  
DIN left or DIN right; to open outwards or inwards**

- Clearance width selectable
- Integrated sound insulation
- Sealing system featuring contact springs made from special foam sealing profiles coated in stainless steel
- Low closing forces due to slanted contact surfaces
- Threshold to floor features a rising 7-degree incline (outside area to cabin floor)
- Profile cylinder for locking the door from the outside and from the inside
- Can be opened from outside and inside using contact switch
- Door handle in stainless steel (rod handle)

### Available dimensions:

800 x 2,100 mm	(approx.: clearance width)
1,000 x 2,100 mm	(approx.: clearance width)
1,200 x 2,100 mm	(approx.: clearance width)
1,400 x 2,100 mm	(approx.: clearance width)

*Further sizes available on request*

**Additional fittings:** Openwaveguide

### Additional fittings, exterior:

- Door leaf exterior in colour requested from Interflex colour chart
- Door leaf exterior printed with warning signs and customer logo – PeDIP (personalised door image panel) from coated base plate
- Door leaf exterior printed with warning signs and customer logo – PeDIP (personalised door image panel) on ESG safety glass pane
- Door leaf exterior with illuminated warning signs
- Rod handle, powder-coated in requested colour shade
- Frame (lock-side) printed with warning signs
- Frame made of glass in the same way as the door leaf and frame (lock-side) can be optionally printed with customer logo or warning signs
- Door leaf and frame clad with 1 mm lead
- Door leaf and frame clad with 2 mm lead
- Door leaf and frame clad with 3 mm lead

### Additional fittings, interior:

- Door leaf interior in wall colour
- Door leaf interior printed with warning signs and customer logo made from coated base plate (wall colour shade cannot be matched 100%)
- Door leaf interior printed with warning signs and customer logo on ESG safety glass pane
- Rod handle powder-coated in requested colour shade
- LED circumferential warning profile in red, flush-fitted into frame, cabin interior side
- LED floor warning profile in red, cabin interior side
- Emergency exit light over door

Note: Delivery time 4 weeks after receipt of order.

# Pneumatic RF doors

Design and quality



Design details



Technical details



Video

Our core competencies at Interflex Medizintechnik



## Pneumatic RF doors

Easier to open – easier to close. These RF doors feature pneumatic assist for increased convenience on opening and closing.

### Technical description:

#### Single-leaf pneumatic RF door, DIN left or DIN right, opens outwards

- Clearance width selectable
- Integrated sound insulation
- Sealing system featuring contact springs made from foam sealing profiles coated in stainless steel
- No closing forces necessary as the seals are pressed against the doorframe by the pneumatic contact system when the door is closed
- Door leaf is opened and closed manually
- Profile cylinder for locking the door from the outside and from the inside
- Can be opened from outside and inside using contact switch
- Door handle in stainless steel (rod handle)
- Floor threshold is even for easy disabled access (cabin floor to outside area)
- Invisible door hinges

### Available dimensions:

800 x 2,100 mm	(approx.: clearance width)
1,000 x 2,100 mm	(approx.: clearance width)
1,200 x 2,100 mm	(approx.: clearance width)
1,400 x 2,100 mm	(approx.: clearance width)

Available on request: Further sizes, inward-opening

**Additional fittings:** Openwaveguide

### Additional fittings, exterior:

- Door leaf exterior in colour requested from Interflex colour chart
- Door leaf exterior printed with warning signs and customer logo from coated base plate
- Door leaf exterior printed with warning signs and customer logo on ESG safety glass pane
- Door leaf exterior with illuminated warning signs
- Rod handle, powder-coated in requested colour shade
- Frame (lock-side) printed with warning signs
- Frame made of glass in the same way as the door leaf and frame (lock-side) can be optionally printed with customer logo or warning signs

### Additional fittings, interior:

- Door leaf interior in wall colour
- Door leaf interior printed with warning signs and customer logo made from coated base plate (wall colour shade cannot be matched 100%)
- Door leaf interior printed with warning signs and customer logo on ESG safety glass pane
- Rod handle, powder-coated in requested colour shade
- LED circumferential warning profile in red, flush-fitted into frame, cabin interior side
- LED floor warning profile in red, cabin interior side
- Emergency exit light over door

Note: Delivery time 8 weeks after receipt of order.

# Fully automatic RF doors

Design and quality



Design details



Technical details



Video

Our core competencies at Interflex Medizintechnik



## Fully automatic RF doors

Entry at the touch of a button. Step inside to choose from a large range of RF doors for your Intercabin, available for immediate dispatch. All our doors meet the highest standards for sound insulation, shielding attenuation and convenience of operation.

### Technical description:

**Single-leaf, fully automatic RF door, DIN left or DIN right, opens outwards**

(inward-opening doors cannot be supplied)

- Clearance width selectable
- Integrated sound insulation
- Sealing system featuring contact springs made from special foam sealing profiles coated in stainless steel
- No closing forces necessary as the door leaf opens and closes completely automatically thanks to our fully automatic design
- Opens and closes at the touch of a button
- Floor threshold is even for easy disabled access (cabin floor to outside area)
- Includes panic function: door can be opened from the inside at any time
- Finger protection roll on secondary closing edge (interior)
- Crush injuries are avoided using sophisticated sensor technology
- Door handle in stainless steel (rod handle)
- Invisible door hinges

### Available dimensions:

800 x 2,100 mm	(approx.: clearance width)
1,000 x 2,100 mm	(approx.: clearance width)
1,200 x 2,100 mm	(approx.: clearance width)

Further sizes available on request

**Additional fittings:** Openwaveguide

### Additional fittings, exterior:

- Door leaf exterior in colour requested from Interflex colour chart
- Door leaf exterior printed with warning signs and customer logo from coated base plate
- Door leaf exterior printed with warning signs and customer logo on ESG safety glass pane
- Door leaf exterior with illuminated warning signs
- Push handle powder-coated in requested colour shade
- Frame (lock-side) printed with warning signs
- Frame made of glass in the same way as the door leaf and frame (lock-side) can be optionally printed with customer logo or warning signs
- Door leaf and frame clad with 1 mm lead
- Door leaf and frame clad with 2 mm lead
- Door leaf and frame clad with 3 mm lead

### Additional fittings, interior:

- Door leaf interior in wall colour
- Door leaf interior printed with warning signs and customer logo made from coated base plate (wall colour shade cannot be matched 100%)
- Door leaf interior printed with warning signs and customer logo on ESG safety glass pane
- Push handle powder-coated in requested colour shade
- LED circumferential warning profile in red, flush-fitted into frame, cabin interior side
- LED floor warning profile in red, cabin interior side
- Emergency exit light over door

Note: Delivery time 12 weeks after receipt of order.

# RF glass doors

Design and quality



Design details



Technical details



Video

Our core competencies at Interflex Medizintechnik



## RF glass doors

A better view in, a better view out.

Our glass doors allow more light and transparency in the RF cabin

### Technical description:

**Single-leaf RF glass door,  
DIN left or DIN right, to open outwards or inwards**

- Clearance width selectable
- Integrated sound insulation
- Sealing system featuring contact springs made from foam sealing profiles coated in stainless steel
- Low closing forces due to slanted contact surfaces
- Partially-printed door leaf made from glass (cabin interior and cabin exterior), screen printed
- Threshold to floor features a 7-degree incline (outside area to cabin floor)
- Profile cylinder for locking the door from the outside and from the inside
- Can be opened from outside and inside using contact switch
- Door handle in stainless steel (rod handle)

### Available dimensions:

800 x 2,100 mm	(approx.: clearance width)
1,000 x 2,100 mm	(approx.: clearance width)
1,200 x 2,100 mm	(approx.: clearance width)

Further sizes available on request

**Additional fittings:** Openwaveguide

### Additional fittings, exterior:

- Fitted with PrivaLite: the viewing area of the glass door can be switched from transparent to translucent (clear glass/frosted glass)
- Finished door leaf in requested colour shade (standard colour is white)
- Finished door leaf, optionally featuring customer logo or warning signs
- Rod handle, powder-coated in requested colour shade
- Frame (lock-side) printed with warning signs
- Frame made of glass in the same way as the door leaf and frame (lock-side) can be optionally printed with customer logo or warning signs
- Frame made of glass in the same way as the door leaf and frame (lock-side) with illuminated warning signs

### Additional fittings, interior:

- Finished door leaf in requested colour shade (standard colour is white)
- Finished door leaf, featuring customer logo or warning signs
- Rod handle powder-coated in requested colour shade
- LED circumferential warning profile in red, flush-fitted into frame, cabin interior side
- LED floor warning profile in red, cabin interior side
- Emergency exit light over door

Note: Delivery time 8 weeks after receipt of order.

# RF double doors

Design and quality



Design details



Technical details



Video

Our core competencies at Interflex Medizintechnik



## Double-leaf RF doors

Because the double doors can open at various angles, you will always have sufficient space.

### Technical description

#### Double-leaf RF doors, DIN left or DIN right, open outwards

- Door with one fixed leaf and one swing leaf
- Clearance width variable
- Integrated sound insulation
- Sealing system featuring contact springs made from foam sealing profiles coated in stainless steel
- Low closing forces due to slanted contact surfaces
- Threshold to floor features a rising 7-degree incline (outside area to cabin floor)
- Profile cylinder for locking the door from the outside and from the inside
- Door handle in stainless steel (rod handle) can be opened from outside and inside using contact switch

#### Available dimensions:

800 mm / 1,200 mm	(fixed leaf/swing leaf)
1,000 mm / 1,200 mm	(fixed leaf/swing leaf)
1,200 mm / 1,200 mm	(fixed leaf/swing leaf)

Optional DIN L or DIN R for swing leaf

Further sizes available on request

**Additional fittings:** Openwaveguide

### Additional fittings, exterior:

- Door leaf exteriors in colour requested from Interflex colour chart
- Door leaf exteriors printed with warning signs and customer logo from coated base plate
- Door leaf exteriors printed with warning signs and customer logo on ESG safety glass pane
- Door leaf exteriors with illuminated warning signs
- Rod handles, powder-coated in requested colour shade
- Door leaves and frame clad with 1 mm lead
- Door leaves and frame clad with 2 mm lead
- Door leaves and frame clad with 3 mm lead

### Additional fittings, interior:

- Door leaf interiors in wall colour
- Door leaf interiors printed with warning signs and customer logo made from coated base plate (wall colour shade cannot be matched 100%)
- Door leaf interiors printed with warning signs and customer logo on ESG safety glass pane
- Rod handles, powder-coated in requested colour shade
- LED circumferential warning profile in red, flush-fitted into frame, cabin interior side
- LED floor warning profile in red, cabin interior side
- Emergency exit light over door

Note: Delivery time 12 weeks after receipt of order.

# RF sliding doors

Design and quality



Design details



Technical details



Video

Our core competencies at Interflex Medizintechnik



## RF sliding doors

### Technical description

**RF sliding door, DIN left or DIN right, moves outwards in pocket**

- Clearance width variable
- Integrated sound insulation
- Sealing system featuring contact springs made from foam sealing profiles coated in stainless steel
- No closing forces necessary as the door leaf opens and closes completely automatically thanks to our fully automatic concept
- Floor threshold is even for easy disabled access (cabin floor to outside area)
- Includes panic function: door can be opened from the inside at any time
- Door handle in stainless steel (rod handle)
- Crush injuries are avoided using sophisticated sensor technology
- Opens and closes electrically using button
- Opens automatically in the event of power failure (battery-supported)

### Available dimensions:

Sliding door, 2,100 mm clearance height  
 Clearance width approx. 1,500 mm  
 Clearance width approx. 1,800 mm  
 Clearance width approx. 2,000 mm

*Further sizes available on request  
 (up to 3,000 mm possible)*

### Additional fittings, exterior:

- Door leaf exterior in colour requested from Interflex colour chart
- Door leaf exterior printed with warning signs and customer logo made from coated base plate
- Rod handles, powder-coated in requested colour shade
- Door leaf and frame clad with 1 mm lead
- Door leaf and frame clad with 2 mm lead
- Door leaf and frame clad with 3 mm lead

### Additional fittings, interior:

- Door leaf interiors in wall colour
- Door leaf interiors printed with warning signs and customer logo made from coated base plate (wall colour shade cannot be matched 100%)
- LED circumferential warning profile in red, flush-fitted into frame, cabin interior side
- LED floor warning profile in red, cabin interior side
- Emergency exit light over door

Note: Delivery time 16 weeks after receipt of order.



# PeDIP

Personalised door image panel



PeDIPs

## Design and safety



## Custom doors

Whatever the door is to feature – your logo, design elements or functional and safety elements – we finish every door leaf with UV print, in any language and in selected designs.



Note: Delivery time 6 weeks after receipt of order.

# RF door maintenance

Experience the benefit of professional maintenance



Maintenance log



Service concept

A long product life at a fixed price



## RF door maintenance

### Reasons to carry out RF door maintenance

Safety regulations in accordance with Directive BGR232 specify that annual inspections should be carried out on power-operated doors and we recommend annual door maintenance to our customers with conventional RF doors, too. At first glance, door maintenance is an additional cost factor to be planned in to the operational budget for your MRI system. We have compiled some reasons for you that show why it makes sense to conclude a maintenance contract.

### ✓ Reliable scanning sequences and smooth work processes

A properly functioning RF door is an absolute necessity for fast and safe diagnostics, especially if you deal with a high volume of patients. The RF seals are durable with almost no need for any maintenance at all from the user, so long as the contact surfaces are cleaned regularly. However, the shielding attenuation, and therefore the safety of the MRI operating environment, decreases over time. Door maintenance is an investment in the safe operation of your RF cabin and a way for you to proactively prevent interruptions, downtime and poor scan results.

### ✓ Ensuring a prolonged service life

Regular inspection and maintenance increases the service life of RF doors and, taking a long-term perspective, they may also prevent the need to carry out complex repairs or replace individual components early. Most importantly, downtime in the event of damage can be minimised if maintenance intervals are regular.

### ✓ Minimising damage

If any defects are discovered during

maintenance, these can usually be quickly remedied by our service technician on site. This primarily serves to maintain the operational safety of the MRI system, thereby ensuring the safety of employees and patients. It also reduces the damage which could be caused by any defects or signs of wear that could go unnoticed or unremedied.

### ✓ Fixed prices

Our flat-rate service charges prevent unpleasant surprises. The service charge includes defined work processes and all replacement and spare parts required as part of RF door maintenance as well as the costs for maintenance work itself, RF measurement (prior to and following execution of the maintenance work) as well as travel costs. We offer attractive preferential rates for contract customers who choose an RF door maintenance contract lasting several years.

### Experience the benefit of professional maintenance

We offer you professional work and guarantee the highest quality. Trained employees with years of experience in the maintenance of our RF door systems ensure that our high-quality products are properly monitored even after several years of daily operation. We are able to provide our customers with attractive guarantees, going over and above the legal warranty conditions when our RF doors are maintained annually.

This is how we stand by the high standard we set for ourselves. Our mobile Service Teams are available to assist you across the whole of Europe and even overseas, meaning rapid response times and minimal downtimes in the event that maintenance support is needed.

# System requirements

Quench pipes	<b>54</b>
Magnetic shielding	<b>56</b>
Structure-borne noise insulation	<b>58</b>
Soundproofing packages	<b>60</b>
Ventilation	<b>62</b>
Medical gases	<b>64</b>

# Quench pipes

Get everything you need from a single supplier



Video



Versions



Add-ons



Connection points

## Safety when operating your MRI system



## Quench pipes

Almost all MRI systems require a quench pipe, which is a pipe with a diameter of 20 to 40 cm or sometimes more. In very rare cases, MRI systems may quench. Here the word "quench" means a sudden transition from a superconductive to normal conductive state. The energy of the magnetic field is then converted into heat energy.

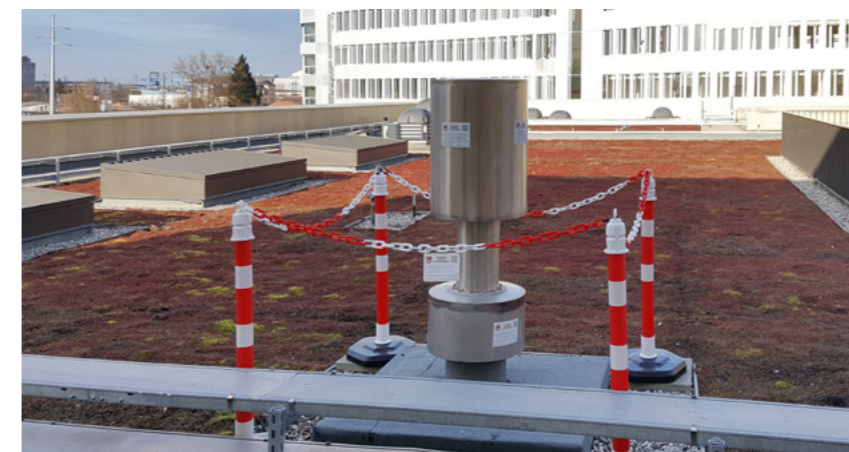
The magnets are cooled using helium, which then evaporates due to the heat. In such cases, the gas has to be channeled into the atmosphere as quickly and safely as possible. This is what the quench pipe is required for. Interflex offers a compatible quench pipe system for all MRI system manufacturers. Only the outlets differ from manufacturer to manufacturer.

### We offer the following versions:

- Variation Q 1:** Quench pipe outlet, facade, conical
- Variation Q 2:** Quench pipe outlet facade, flush
- Variation Q 3:** Quench pipe outlet over building, roof, in conical form
- Variation Q 4:** Quench pipe outlet over building, roof, in cap form
- Variation Q 5:** Custom solution specific to system manufacturer

### The following add-ons are available to select:

- ZQ 1:** Add-on, safety barrier
- ZQ 2:** Add-on, helipad



# Magnetic shielding

Operating MRI systems safely

Protection from the inside and from the outside



## Magnetic shielding

MRI facilities are frequently influenced by their immediate environment. Moving ferromagnetic masses such as lifts, lorries or moving vehicles in underground garages are all interfering sources that can impact the functioning of your MRI system.

The MRI itself has a strong magnetic field. This may lead to limit values being exceeded in the immediate vicinity and to malfunctions occurring. For this reason, electrical devices or pacemakers must be protected against the strong magnetic field.

To provide reliable protection both for your environment and for your MRI system, Interflex Medizintechnik will discuss the necessary measures with you and carry them out accordingly. We make use of ferromagnetic material, generally Stabolec, and in exceptional cases also Armco pure iron. The calculations required to spec this are provided to us by the system supplier.

Interflex offers an on-site measurement service during the planning phase. You can find out more in the section on services.



# Structure-borne noise insulation

Operating convenience starts with sound insulation



Structure-borne noise insulation

## Recognising and preventing problems in advance



## Structure-borne noise insulation

### What is structure-borne noise?

We talk about structure-borne noise when noise spreads through solid bodies in the form of vibrations. In contrast to liquids or gases, in which sound is distributed evenly in all directions, the waves in fixed bodies can be distributed in many ways depending on the quality and geometry of an object. Structure-borne noise also spreads differently depending on the density of the material involved. If the density within the solid body also changes, then this will have a direct effect on the noise distribution. It is therefore almost impossible to predict precisely how structure-borne noise will spread. That would require an in-depth analysis of the material.

### How can we achieve good structure-borne noise insulation?

If you wish the MRI noise resulting from an examination to be stopped from penetrating the wall, we have to attempt to prevent any vibrations whatsoever from occurring. If a component starts to vibrate, subsequent insulation is of course difficult. This is because, as mentioned above, the path of the structure-borne noise is not known.

### Interflex Medizintechnik is able to offer you the right products:

#### Version KS 1: Structure-borne noise package 1

Elastomeric bearing support for the entire Intercabin, thickness 12.5 mm, elastomer

#### Version 1A: Structure-borne noise package 1A

Doubled elastomeric bearing support for the entire Intercabin, thickness 25 mm, elastomer

#### Version KS 2: Structure-borne noise package 2

Elastomeric bearing support with 4 individual stainless steel plates positioned under the MRI system base points

#### Version KS 3: Structure-borne noise package 3

Elastomeric bearing support with 1 large stainless steel plate approx.: 1800 x 1800 x 70 mm under the entire MRI system

Interflex offers a vibration measurement service during the planning phase. You can find out more in the section on services.

Request an independent sound insulation certificate. Interflex Medizintechnik will mediate an appropriate partner for you who is able to issue a conclusive expert's report.

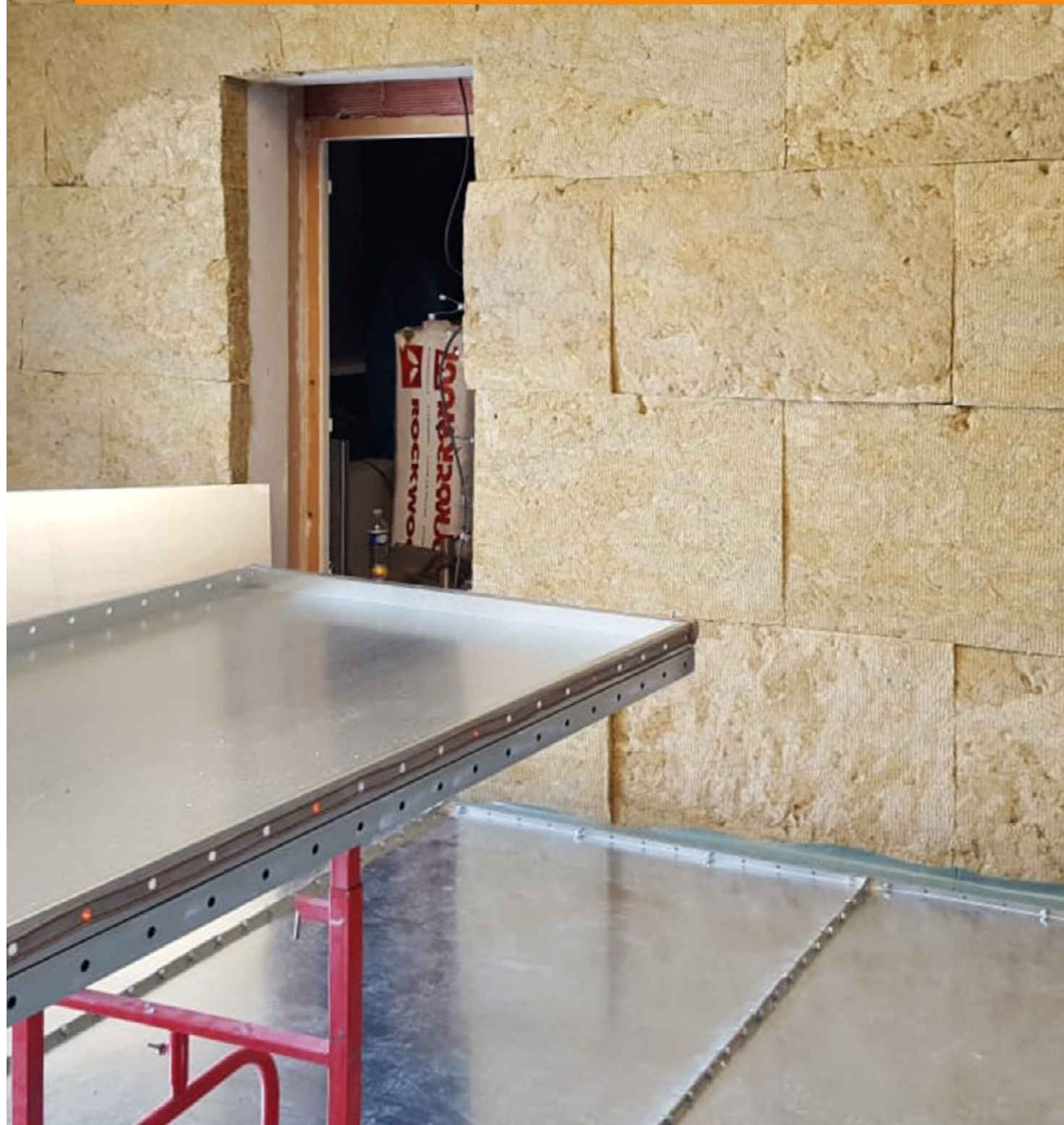
# Sound insulation

Operating convenience starts with sound insulation



Sound insulation

## Recognising and preventing problems in advance



## Sound insulation

It is particularly important to reduce noise levels to make them bearable. Noise not only has a negative effect on the psyche but can also quickly adversely affect a work atmosphere. And we have evidence to show that productivity increases substantially when it is possible to work in a relaxed, quiet atmosphere.

Interflex Medizintechnik has brought together the right products for this. You can select from a range of different sound insulation packages. The individual soundproofing packages differ in the structure of the RF shielding, the RF windows and, of course, the RF doors.

In combination with correctly-executed preliminary work on the shell structure, this will give you a workplace which offers you outstanding operating convenience.

**Interflex Medizintechnik is able to offer you the right products:**

**Soundproofing package 1:**

Construction sound reduction index  $R_w$ ,  $R \geq 42$  dB

**Soundproofing package 2:**

Construction sound reduction index  $R_w$ ,  $R \geq 50$  dB

**Soundproofing package 3:**

Construction sound reduction index  $R_w$ ,  $R \geq 55$  dB

Request an independent sound insulation certificate.

Interflex Medizintechnik will mediate an appropriate partner for you who is able to issue a conclusive expert's report.



# Ventilation

Get everything you need from a single supplier



Versions



Add-ons



Connection points

Professional design for correct MRI operation



## Ventilation

Interflex Medizintechnik offers all the pipework for the air-conditioning technology in your Intercabin. This consists of smooth-walled PVC or aluminium pipes. We ensure clear connection points for the air-conditioning system fitters for the rest of the site.

A waveguide or honey comb cartridge provides the interface between the two. The connection here must be galvanically isolated. Optionally, Interflex Medizintechnik can also provide appropriate galvanic isolation.

Since we have long-standing relationships with all system manufacturers, our ventilation system is adapted to meet all the requirements of your particular MRI system. We also have appropriate solutions for sterile surgical environments. Interflex offers special MRI-compatible H13 filters for surgical environments.

### We offer the following versions:

- Version L 1:** Swirl diffusers, white plastic as standard, 4 pieces
- Version L 2:** Ventilation system in ceiling trim, ventilation outlet laterally embedded (wall)
- Variation L 3:** Ventilation system in ceiling trim, ventilation outlet fitted flush at bottom (to ceiling)
- Variation L 4:** H13 filter ventilation to be certified for use in a surgical environment

### The following add-ons are available to select:

- ZL 1:** Galvanic isolation, canvas connecting pieces





# Medical gases

Equipping the system for medical gases



Versions



Connection points

## Safe RF routing for medical gases



## Equipping the system for medical gases

Interflex Medizintechnik offers completely safe routing of medical gases for the Intercabin. The following options are available for RF-safe gas routing into the Intercabin:

### Version MG 1: DN 68

The medical gases are carried as far as the Intercabin in copper pipes, which are then replaced by plastic pipes before entering the Intercabin. The plastic pipes are then routed into the Intercabin using a waveguide and then the pipes switch back to copper within

the cabin itself. The copper pipework within the Intercabin is laid by a gas fitter in coordination with Interflex Medizintechnik. The pipes can be laid as surface installations or invisibly behind the interior cladding.

### Version MG 2: Copper basic

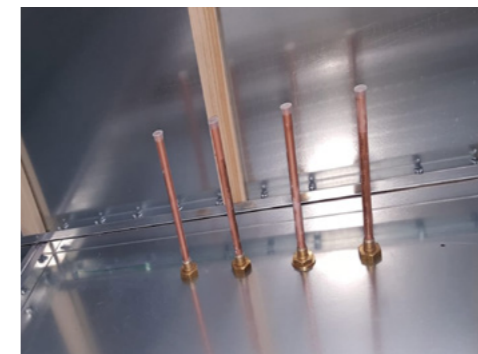
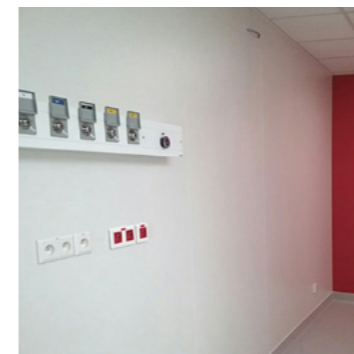
The medical gases are carried up to the Intercabin in copper pipes which are then soldered onto the copper feedthrough. Note that the copper pipes here must be galvanically isolated. Isolation is not included in the

delivery. The copper pipework within the Intercabin is laid by a gas fitter in coordination with Interflex Medizintechnik. The pipes can be laid as surface installations or invisibly behind the interior cladding.

### Version MG 3: Copper Galva

The medical gases are carried up to the Intercabin in copper pipes which are then soldered onto the copper feedthrough. In this version, Interflex Medizintechnik provides pre-installed galvanic isolation in the copper feedthrough meaning that you do not have to worry about whether the connection has been

safely galvanically isolated or whether the RF feedthrough will work properly. The copper pipework within the Intercabin is laid by a gas fitter in coordination with Interflex Medizintechnik. The pipes can be laid as surface installations or invisibly behind the interior cladding.



# Safety

Safety markings	<b>68</b>
RF emergency doors	<b>70</b>
Metal detectors	<b>72</b>
Technical add-ons	<b>74</b>

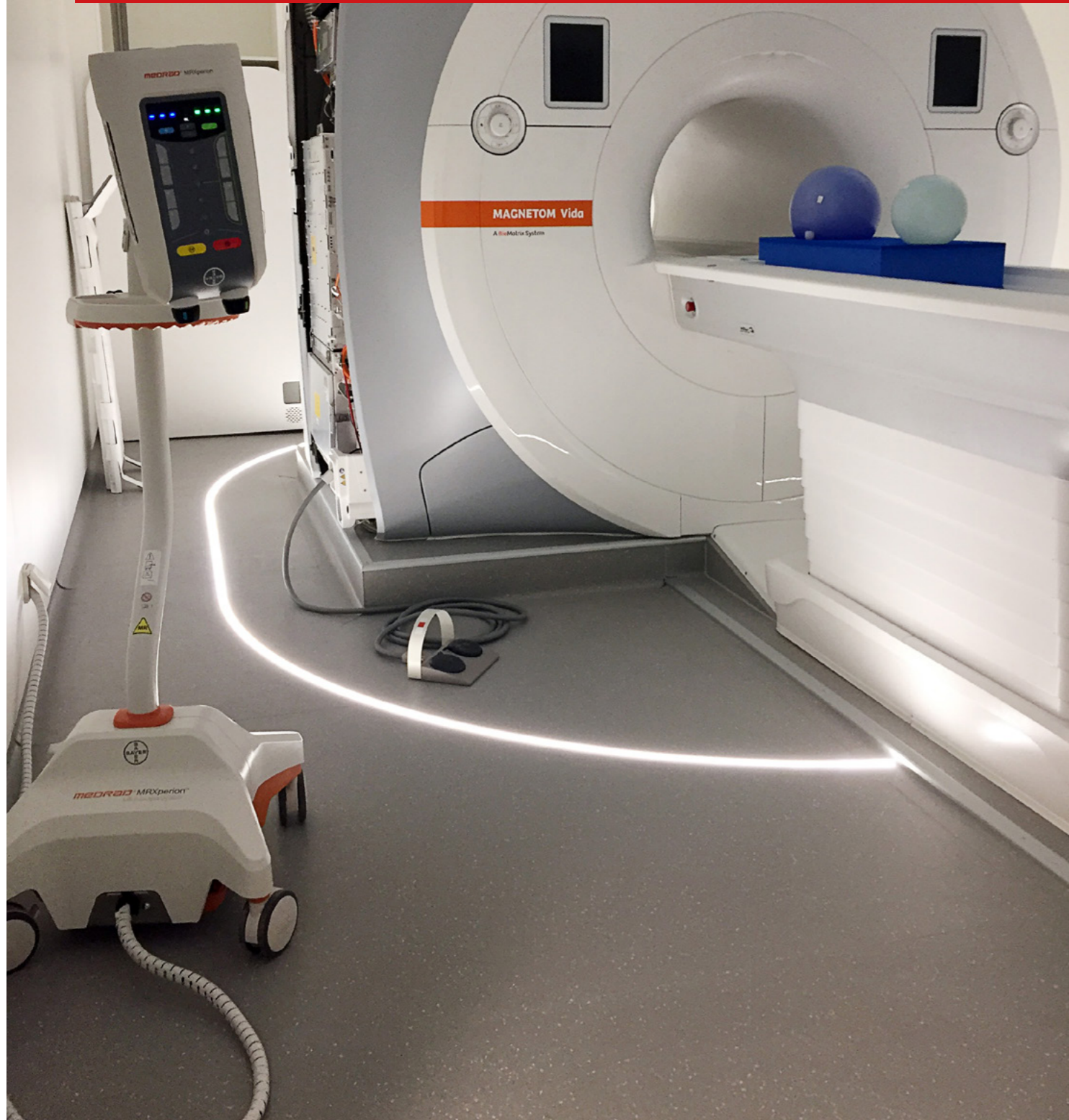
# Safety markings

Avoiding accidents



Design details

## Safety markings for the magnetic field



## Recognising magnetic fields

A static magnetic field is generated within the Intercabin and it exercises a strong force of attraction on ferromagnetic materials. This magnetic field is invisible but it is active when you come within its range. For this reason, Interflex Medizintechnik provides several options to provide a certain visual representation of the invisible magnetic field.

The costs of purchasing these options is marginal in comparison to the costs of damages which may occur. Reducing the risk of accident should always be a priority. In addition to magnetic field markings on the floor, Interflex Medizintechnik can also provide markings on the threshold and frame areas of RF doors. You can find out more in the section on RF doors.

### Safety markings, Intercabin entrance:

Version **SM 1**: LED circumferential warning profile in red, flush-fitted into frame, cabin interior side

Version **SM 2**: LED floor warning profile in red, cabin interior side

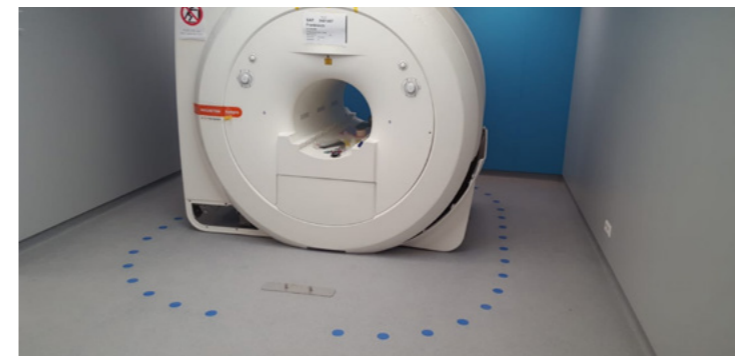
### Safety markings, magnetic field:

Version **SM 3**: Your selected flooring can be marked with coloured dots to show the area of the magnetic field.

Version **SM 4**: Your selected flooring can be marked with a thin coloured line to show the area of the magnetic field.

Version **SM 5**: Your selected flooring can be designed with a different colour to show the area of the magnetic field.

Version **SM 6**: Your selected flooring can be fitted with an embedded LED strip to show the area of the magnetic field.



# RF emergency doors

Safety functions for inward-opening RF doors



Design details

Maximum quality sound insulation



## RF emergency doors

Equipped for all eventualities. Our primary focus is safety. If inward-opening RF doors are installed, you should always also install an emergency door. These emergency doors also meet the highest standards for sound insulation, shielding attenuation and operating convenience.

### Technical description:

**Single-leaf RF emergency door,  
DIN left or DIN right, opens outwards**

- Clearance width 600 x 600 mm
- Integrated sound insulation
- Sealing system featuring contact springs made from special foam sealing profiles coated in stainless steel
- Low closing forces due to slanted contact surfaces
- All four sides feature a rising 7-degree incline
- Can be opened from the inside at any time
- Door handle in stainless steel

**General additional fittings:** Openwaveguide

### Additional fittings, exterior:

- Door leaf exterior in colour requested from Interflex colour chart
- Door leaf exterior printed with warning signs and customer logo – PeDIP (personalised door image panel) from coated base plate
- Profile cylinder for locking door from outside; ability to open door from inside must be assured at all times.
- Door leaf and frame clad with 1 mm lead
- Door leaf and frame clad with 2 mm lead
- Door leaf and frame clad with 3 mm lead

### Additional fittings, interior:

- Door leaf interior in wall colour
- Door leaf interior printed with warning signs and customer logo made from coated base plate (wall colour shade cannot be matched 100%)
- Emergency exit light over door

Note: Delivery time 4 weeks after receipt of order.

# Metal detectors

Avoiding accidents



Technical details



Accident video

Step into safety



## Increase availability and minimise risks

MRI system downtime incurs high costs for operators. To minimise this risk or even prevent it entirely, we recommend that a metal detector is installed.

A metal detector in the entrance area prevents ferromagnetic objects and technical devices from being brought into the MRI system by issuing a visual and acoustic signal. These materials can easily turn into projectiles, causing severe injuries to patients or personnel.



Note: Delivery time 8 weeks after receipt of order.

# Technical safety add-ons

Avoiding accidents



Safety add-ons



Technical details

Safety is paramount



## Safety is paramount

Interflex Medizintechnik offers you a wide range of technical safety add-ons.

**The following products are included in our range:**

### Oxygen monitor

In extreme cases, oxygen levels in the Intercabin may fluctuate. The MRI oxygen monitor provides an instant warning if oxygen levels drop. Every fluctuation is detected and staff alerted by an alarm signal.

### ASD

An aspirating smoke detector (ASD) is a multi-point active detector which constantly aspirates air through a fan via a pipeline network. A smoke detector checks the aspirated air for smoke particles in a measuring chamber. Shortly prior to reaching the alert threshold, a preliminary alarm is triggered. On reaching the alert threshold, the main alarm is triggered.

Blockages and interruptions are reported as malfunctions by an air flow monitoring system. Here, too, the acquisition cost of these options is marginal in comparison to the costs of damages which may occur.

### Emergency exit light – emergency lighting

Optimum safety can only be achieved when exit route markings are used. They are the only way for a patient get out of the danger zone as quickly and safely as possible.

### Safety lighting

Safety lighting allows your employees to help patients safely down from the couch in case of emergency so that they can exit the Intercabin as quickly as possible.

# Floors, walls and ceilings

Flooring – standard	<b>78</b>
Flooring – conductive	<b>80</b>
Flooring – conductive Flooring for surgical environments	<b>82</b>
Flooring – custom	<b>84</b>
Skirting board designs	<b>86</b>
Wall cladding, standard	<b>88</b>
Wall cladding Low flammability	<b>90</b>
Wall cladding, Rigips	<b>92</b>
Wall cladding for surgical environments	<b>94</b>
Digitally printed options	<b>96</b>
Digital print motifs	<b>98</b>
Wall panels	<b>100</b>
Grid ceiling, standard	<b>102</b>
Grid ceiling, Ecophone	<b>104</b>
Grid ceiling for surgical environments	<b>106</b>
Rigips ceilings	<b>108</b>

# Flooring

Elastic and homogeneous PVC flooring



Design details



Technical details

The highest standards in healthcare



## Standard flooring

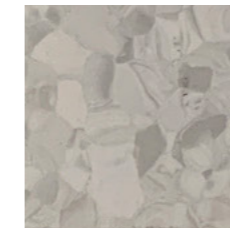
Elastic, homogeneous PVC flooring to ISO 10581/EN 649, in a non-directional, finely-structured, monochrome tone-on-tone design. Suitable for heavy-duty use in hospitals. This flooring does not require any additional coatings.

**For use only in RF cabins without medical gases.**

Interflex Medizintechnik has compiled a large selection of floor designs:

### Eclipse Premium Classic Line

The basic fittings for the Intercabin allow you to select between 2 colour options



Medium pure grey



Medium blue

<b>Eclipse Premium Classic Line</b>	18 Colours available for selection
<b>Eclipse Premium Spirit Line</b>	36 Colours available for selection
<b>Eclipse Premium Spectra Line</b>	12 Colours available for selection
<b>Primo Premium</b>	36 Colours available for selection
<b>Primo Safe T</b>	15 Colours available for selection

Over 100 colours are available for you to select.

Please bear in mind that not all colours can always be supplied within 4 weeks.

We are happy to send you a sample catalogue for a deposit of €75.  
We will reimburse you the deposit upon return shipment of the undamaged sample book or upon purchase of an Intercabin.



# Flooring

## Conductive flooring



The highest standards in healthcare



## Conductive flooring

The new Premium collection Primo SD is highly functional and features a non-directional design. It is highly resistant to chemicals, stains and frequent use. Suitable for heavy-duty use in hospitals. This flooring does not require any additional coatings.

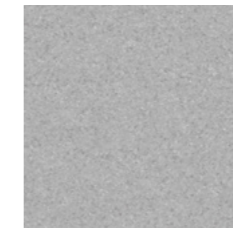
**For use in RF cabins with medical gases.**

Interflex Medizintechnik has compiled a selection of 8 different colours of conductive flooring for you:

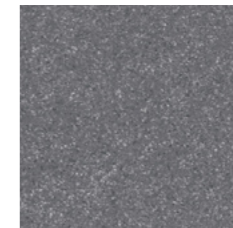
### Primo SD Line



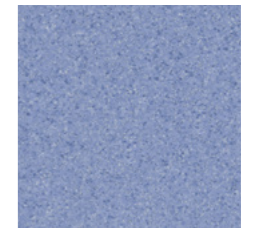
*Medium pure grey (standard)*



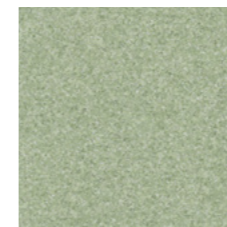
*Medium pure dark grey (standard)*



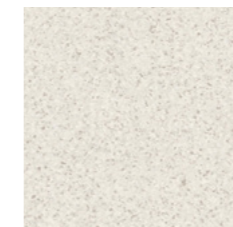
*Dark cool grey*



*Medium blue*



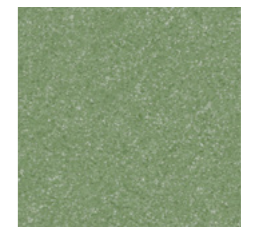
*Medium green*



*Light cool beige*



*Medium warm beige*



*Dark green*

Please bear in mind that not all colours can always be supplied within 4 weeks.

We are happy to send you a sample catalogue for a deposit of €75. We will reimburse you the deposit upon return shipment of the undamaged sample book or upon purchase of an Intercabin.

# Flooring

Conductive flooring for surgical environments



Design details



Technical details

The highest standards in healthcare



## Flooring for surgical environments

For the high hygiene requirements demanded in healthcare. The patented iQ design ensures maximum durability and very easy cleaning over the entire lifetime of the flooring. Suitable for heavy-duty use in operating theatres. This flooring does not require any additional coatings.

**For use in RF cabins with medical gases.**

Interflex Medizintechnik has compiled a large selection of conductive floors for you:

**IQ Granit SD:** 14 colours available for selection

Please bear in mind that not all colours can always be supplied within 4 weeks.

We are happy to send you a sample catalogue for a deposit of €75. We will reimburse you the deposit upon return shipment of the undamaged sample book or upon purchase of an Intercabin.



# Flooring

Custom



Design details



Technical details

Endless possibilities



## Flooring as a design element

Select your Intercabin flooring from our wide product range. We can fulfil almost any design request, from elastic PVC floors through to high-quality real wood parquet or granite tiling.

**For use only in RF cabins without medical gases.**

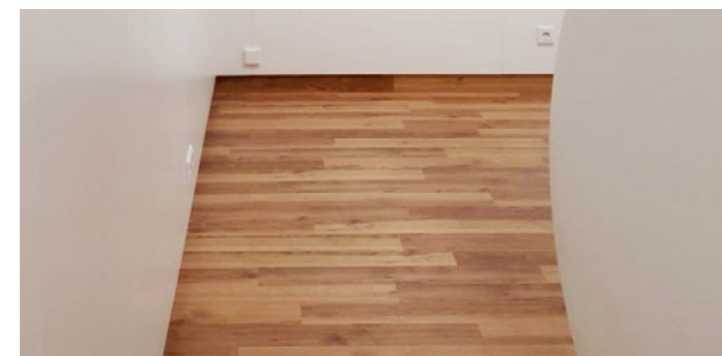
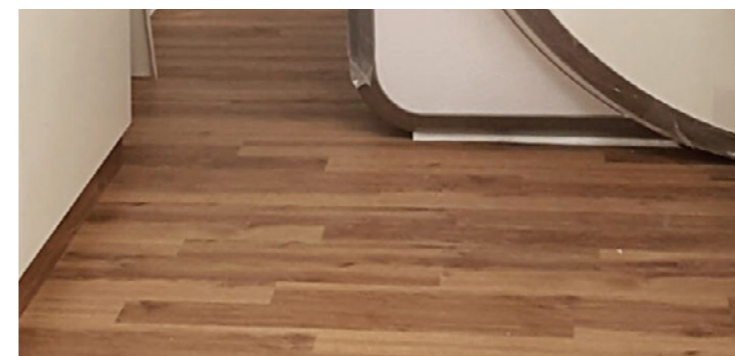
Interflex Medizintechnik has compiled a large selection of elastic floor designs:

- iD Revolution
- iD Supernature & Tattoo
- iD Mixonomi
- iD Inspiration 55/70
- iD Inspiration 40

Please bear in mind that not all colours can always be supplied within 4 weeks.

We are happy to send you a sample catalogue for a deposit of €75. We will reimburse you the deposit upon return shipment of the undamaged sample book or upon purchase of an Intercabin.

Please contact us directly should you require real wood parquet or granite tiles; we adapt these to match the design of your practice and discuss the details with your suppliers on-site.



# Skirting board designs

Connection to the wall cladding

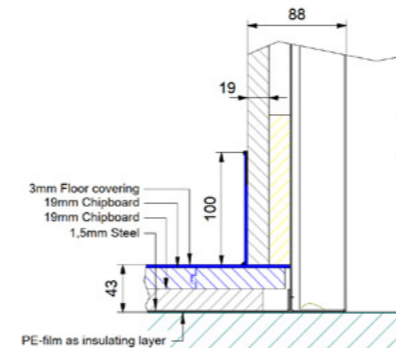


Functional and completely hygienic

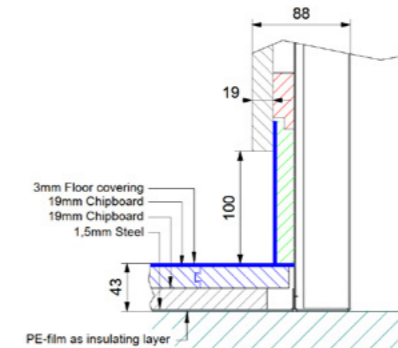


## Skirting board designs

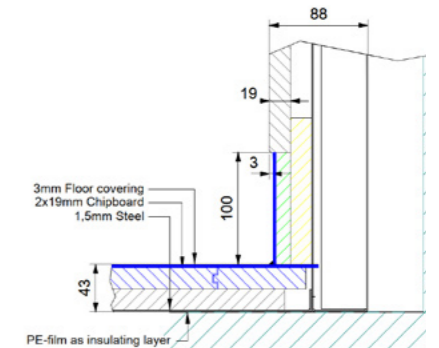
We offer 6 different skirting board designs in our range. In the healthcare sector, the requirements for flooring and their connections to the wall cladding are extremely complex. That is why you should select the ideal design for your space in consultation with your hygiene specialist.



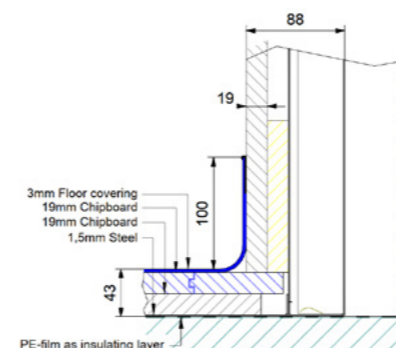
**Version 1 (standard):**  
Skirting board with silicone joint, installed in front of interior construction panel



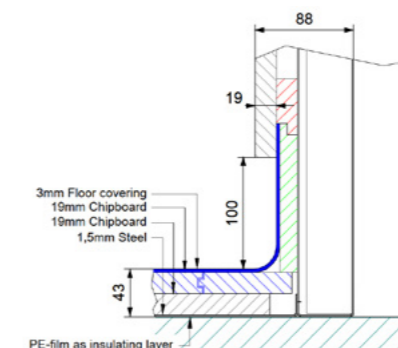
**Version 2:**  
Vertical skirting board with silicone joint, installed recessed from interior construction panel



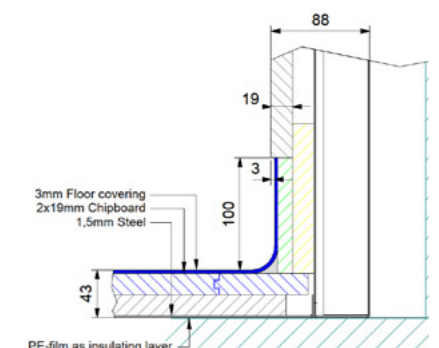
**Version 3:**  
Vertical skirting board without silicone joint, installed flush to interior construction panel



**Version 4:**  
Concave skirting board without silicone joint, installed in front of interior construction panel with end profile



**Version 5:**  
Concave skirting board without silicone joint, installed recessed from interior construction panel



**Version 6:**  
Concave skirting board without silicone joint, installed flush to interior construction panel

# Wall cladding

Standard



Design details



Technical details

Hygienic wall cladding for normal usage



## Wall cladding, standard

Whatever your location, the interior design of the Intercabin can be used to create both perfect transitions to adjacent rooms and a pleasantly-spacious examination room because of the range of decor options available. Our wall cladding is made of melamine resin-coated chipboard with a thickness of 19 mm.

### The structure is as follows:

Subconstruction, 19 mm, consisting of B2 construction material  
Wall decor, 19 mm, consisting of B2 construction material

### Fire behaviour: B2 acc. DIN 4102-1, normal flammability

Interflex Medizintechnik offers a large selection of decor options. Our standard decor is white. We have subdivided all further decor options into four classes. There are more than 100 decor options to select from.

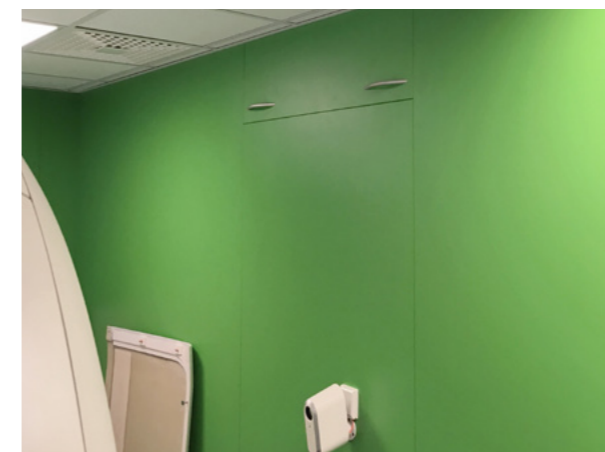
**Class 1 WS:** Unicolour decor in shades of white/grey

**Class 2 WS:** Unicolour decor, full colour

**Class 3 WS:** Special decor options

**Class 4 WS:** Classic decor options

We are happy to send you a sample catalogue for a deposit of €75. We will reimburse you the deposit upon return shipment of the undamaged sample book or upon purchase of an Intercabin.



# Wall cladding

Low flammability



Design details



Technical details

## Low flammability hygienic wall cladding



## Wall cladding, fire protection

The interior of the Intercabin can even be produced using exclusively low flammability materials. To achieve this, a B1 construction material is used not only for the decor panel, but also for all other assembly modules inside the Intercabin. This includes the service level, subconstructions and the floor structure. This massively reduces the fire load.

### The structure is as follows:

Subconstruction, 19 mm, consisting of B1 construction material

Wall decor, 19 mm, consisting of B1 construction material

### Fire behaviour: B-s1-d0 acc. DIN EN 13501-1 – low flammability

In addition, Interflex Medizintechnik offers a large selection of decor options.

Our standard decor is white.

We have subdivided all further decor options into three classes.

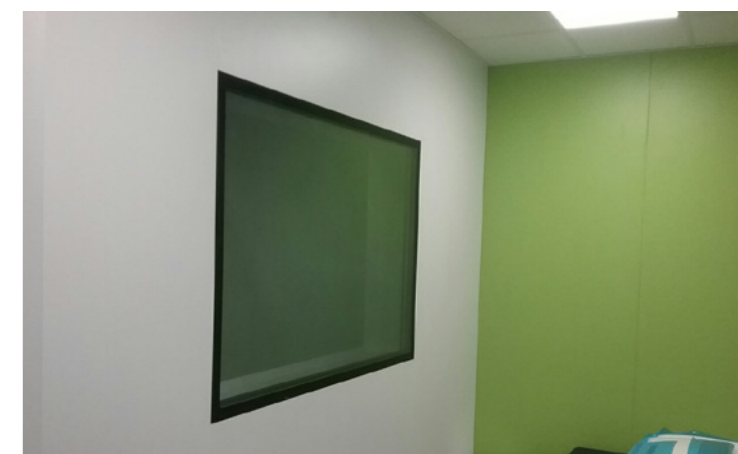
**Class 1 BS:** Unicolour decor in shades of white/grey, fire protection

**Class 2 BS:** Unicolour decor, full colour, fire protection

**Class 3 BS:** Special decor options, fire protection

We are happy to send you a sample catalogue for a deposit of €75.

We will reimburse you the deposit upon return shipment of the undamaged sample book or upon purchase of an Intercabin.



# Wall cladding in Rigips

For exclusive interior design



Hygienic wall cladding for superior requirements



## Exclusive Rigips

Interiors in Rigips delight with their understated, classic design and you won't even notice a difference between the MRI examination room and the other rooms in your practice. There are several special requirements that must be met when creating a Rigips interior design but this can be managed easily with a certain level of know-how.

For this type of wall design, Interflex works exclusively with sto because they provide the necessary quality down to the details. sto colouring is certified environmentally friendly and meets the most stringent criteria for the environment, health and functionality. The latex paint used is water-repellent and abrasion-resistant, meaning stains and spray can easily be removed with water or with cleaning agents.

We are happy to send you a sample catalogue for a deposit of €75. We will reimburse you the deposit upon return shipment of the undamaged sample book or upon purchase of an Intercabin.



# Wall cladding for surgical environments

100% hygienic interior design



Design details



Technical details

Set new standards



## Wall cladding for surgical environments

Surgical environments require specially designed wall protection. For perfect hygiene, a smooth, almost seamless surface is required. Interflex Medizintechnik is able to offer you four different solutions for this purpose.

### Version OPW 1: Rigips

Rigips structure with glass fibre wallpaper and double finishing coat using latex paint.

### Version OPW 2: Wallguard

Homogeneous wall covering for improved hygiene and more efficient cleaning. You can select from 13 different colours.

### Version OPW 3: HPL solid core material

High pressure laminates are particularly suitable as their surfaces are easy to clean and you can select from the same full colour palette and digital printing options as for our Intercabin wall system.

### Version OPW 4: Glass

The surface of this glass interior is almost pore-free and it provides endless design possibilities. This material is truly THE high-end solution.





# Digital printing

Decorative interior design



Design impressions

Create a positive, pleasant atmosphere



## Decorative interior design

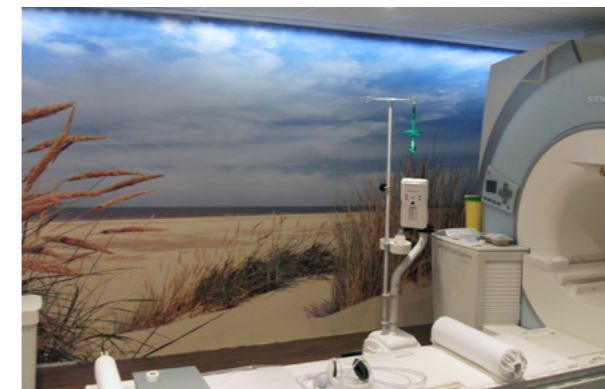
Using the latest UV printing machines, we can print entire wall surfaces in full photo quality. The pigment inks achieve exceptional production results and are highly resistant to scratches and most cleaning agents.

You can select from a large number of motifs or have custom images printed. It is important that the print file is large enough.

### Version DDW 1

**Printed graphic veneer on melamine resin-coated chipboard**

Panels are butt-jointed and are max.: 2,600 x 1,000 mm in size.



### Version DDGW 2

**Printed graphic veneer on glass,** with subconstruction panels which

are butt-jointed and are max.: 2,600 x 1,000 mm in size.



Further custom designs available on request. The resolution of your own image must be at least 300 dpi or 20 megapixels.

# Digitally printed motifs

Decorative interior design



Motif selection

Create a positive, pleasant atmosphere



Motif W 1



Motif W 2



Motif W 3



Motif W 4



Motif W 5



Motif W 6



Motif W 7

Further custom designs available on request. The resolution of your own image must be at least 300 dpi or 20 megapixels.

# Wall panels

From understated to luxurious



Design impressions

## Functional and customisable



### WE 1: Standard wall panelling

Standard wall panelling comes with what we call 'protector profiles' and it fulfils the minimum requirements for the room. Each wall panel is dimensioned to room height and connected via a butt-jointed cover strip.



### WE 2: Luxury wall panelling

Our luxury wall panelling features butt-jointed panels with vertical divisions. Each wall panel is dimensioned to room height and one side of a wall is horizontally divided in a complementary style.



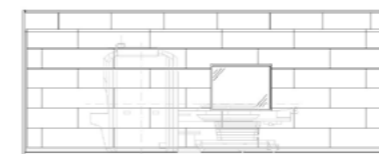
### WE 3: Luxury two-part wall panelling

This wall panelling is the preferred choice if the lower sections of individual walls should be accentuated in a colour shade or special decor. The top joint to the ceiling is then generally unicolour white. You can choose any wall coverings.



### WE 4: Luxury three-part wall panelling

This wall panel features a central section inserted as separating element and serves as protection from ramming when mobile couches or coil racks are used. They can also be used as a functional element if they are installed at the level of medical gas outlets or sockets.



### WE 5: Horizontal wall panelling

This wall panelling is ideal if you would like large, empty spaces to look smaller. The panelling can be unicolour or used for decorative effect using wooden panelling.



### WE 6: Custom built wall panelling

Since we have our own production line, we are even able to produce further wall panelling designs on request. We can also panel single wall sections or single cabin walls.

# Grid ceiling, standard

Functional standard ceiling



Design details



Technical details

Easy to maintain and can be removed at any time



## Grid ceiling, standard

The most economical ceiling solution is the grid ceiling. In an Intercabin, this has to consist of aluminium girders. It has grid dimensions of 600 x 600 mm.

Interflex Medizintechnik offers an AMF ceiling for this purpose which features a visible subconstruction. **DP 1: Ecomin Filigran**

In addition, you can select from two further ceiling panels:

### Version DP 2: Advantage A

Visible subconstruction.  
Easy removal of acoustic ceiling panels.

### Version DP 3: Advantage E

Recessed subconstruction.  
The acoustic ceiling panels are easy to remove.



We are happy to send you a sample catalogue for a deposit of €75.  
We will reimburse you the deposit upon return shipment of the undamaged sample book or upon purchase of an Intercabin.



# Grid ceiling, Ecophone

Outstanding sound insulation



Design details



Technical details

Easy to maintain and can be removed at any time



## Grid ceiling sound insulation

Meets the highest standards of sound insulation.  
In the Ecophone grid ceiling panel, Interflex Medizintechnik offers a high-performance, sound-absorbing ceiling in an appealing design. It has grid dimensions of 600 x 600 mm.

Interflex Medizintechnik offers two versions:

### Version DPE 1: Master A

Visible subconstruction.  
Easy removal of acoustic panels.

### Version DPE 2: Master E

Recessed subconstruction.  
The acoustic ceiling panels are easy to remove.



We are happy to send you a sample catalogue for a deposit of €75.  
We will reimburse you the deposit upon return shipment of the undamaged sample book or upon purchase of an Intercabin.



# Ceilings for surgical environments

The most demanding space



Design details



Technical details

Functional and completely hygienic



## Ceilings for surgical environments

Every hospital has specific areas which are particularly demanding to cater for, not just in terms of acoustics, but also hygiene. Operating theatres are the main culprits here.

Hygiene is truly key in these areas in order to prevent contamination. The environment in specialist areas can be difficult for both patients and staff.

Employees have to make rapid decisions, which increases the need for good communication. Noises from machines not only disturb patients, but also increase the demand and stress levels placed on employees at work.

**Interflex Medizintechnik has the right product:**

### **DPEOP 1: Hygiene Advance A**

Visible subconstruction,  
possible to clean daily with chemical cleaning agents.

Interflex also offers the following options for a hygienic and high-end ceiling for surgical environments.

### **DPEOP 2: Aluminium ceiling**

Grid ceiling made from aluminium panels.

### **DPEOP 3: Rigips ceiling**

With fibreglass fabric and a double latex coating.



# Rigips ceiling

Exclusive interior design



Ceiling cladding for superior requirements



## Rigips ceiling

With a Rigips ceiling, you and your architects have a huge amount of potential to bring to life your individual room design. A Rigips ceiling provides you with a seamless appearance and this creates an aesthetically attractive overall image in your Intercabin.

We always recommend an omniSKIES or a omniPIX SKY for a Rigips ceiling, as they make almost invisible inspection hatches.



# Lighting

omniLUX	<b>112</b>
omniPIX-Wall	<b>114</b>
omniPIX-SKY	<b>116</b>
omniPIX-SKY motifs	<b>118</b>
omniSKIES	<b>120</b>
omniSPOT	<b>122</b>
omniRGB	<b>124</b>
omniPANEL	<b>126</b>



# omniLUX

LED cabin lighting



## Next-generation LED lighting systems



## omniLUX

Our omniLUX LED louvre luminaires in 600 x 600 mm are a highly-efficient and effective light solution. They distribute a glare-reduced and wide-radiating light which evenly illuminates the room and is gentle on the eyes. omniLUX LED louvre luminaires combine minimalistic design with maximum efficiency.

No more replacing bulbs:  
we offer a 5-year warranty on our omniLUX panel.

Our omniLUX louvre luminaires are glare-free and extremely long-lasting. They can even be made dimmable on request. Four omniLUX LED louvre luminaires guarantee an outstanding lighting solution with little shadow and even illumination of the entire work area in an Intercabin with the approximate dimensions.:  
6,000 x 4,000 x 3,000 mm.

### Available in the following versions:

- OL 1:** Square 600 x 600 mm (standard)
- OL 2:** Round Ø570 mm



# omniPIX-WALL

Illuminated wall image



Design details



Technical details

Next-generation LED lighting systems



## omniPIX-WALL

The omniPIX element consists of a backlit, printed Plexiglass panel which is flush-fitted into the wall system just like our RF windows. The element integrates harmoniously into the interior design and can easily be combined with other elements.

You have the option to use the omniPIX-WALL as a virtual window which gives patients the impression that they are looking out from the cabin into the outside world. Or you can design certain areas or an entire wall using omniPIX-WALL elements.

**Design as a virtual window, incl. the same black frame on the interior design panel:**

- Version OPW 1:** 1,200 x 900 mm virtual RF window, small
- Version OPW 2:** 1,500 x 1,000 mm virtual RF window, large
- Version OPW 3:** Custom dimensions, see max. sizes.

**Version OPW 4:** Wall element, max. 2,600 x 1,000 mm



# omniPIX-SKY

Illuminated ceiling image



Design details



Technical details



Design selection

Next-generation LED lighting systems



## omniPIX-SKY

The omniPIX-SKY element consists of a backlit, printed Plexiglass panel, which is inserted into the grid ceiling in the same way as our omniSKIES.

You then have the advantage of being able to realise an image measuring up to 1,800 x 1,800 mm in total, all using only two elements.

**Version OPS 1:** 1.200 x 1,200 mm

**Version OPS 2:** 1.800 x 1,800 mm

**Version OPS 3:** 2.400 x 1,800 mm

Special sizes on request



# omniPIX

Designs for sky simulation



Design selection

## Next-generation LED lighting systems



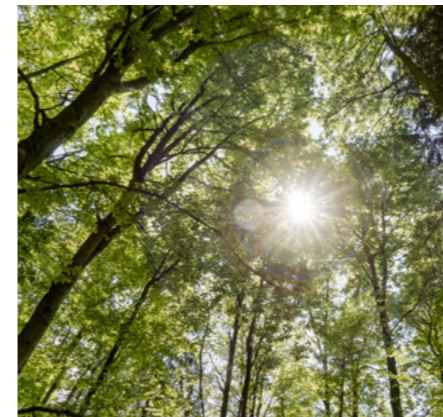
Basic Design 1: Sky



Design 2: Spring awakening



Design 3: Green forest sky



Design 4: Deep green forest sky



Design 5: Marguerite flower



Design 6: Deep green palm leaf holiday

Further custom designs available on request. The resolution of your own image must be at least 300 dpi or 20 megapixels.

# omniSKIES

Sky simulation



Technical details



Next-generation LED lighting systems



## omniSKIES

Raise the roof a little. The omniSKIES will make your Intercabin seem airier, larger and more inviting to patients.

omniLUX louvre luminaires inserted into the ceiling grid and printed with sections of a cloud design. Our standard omniSKIES consists of 9 omniSKIES panels in total, which combine to create a coherent cloud design.

You receive our omniSKIES with 9 panels and the sky design. The version supplied as standard is the OS1 design.



You can select between two versions:

**Installation version OS 1:**  
omniSKIES flush fitted.

**Installation version OS 2:**  
omniSKIES recessed into the grid system.

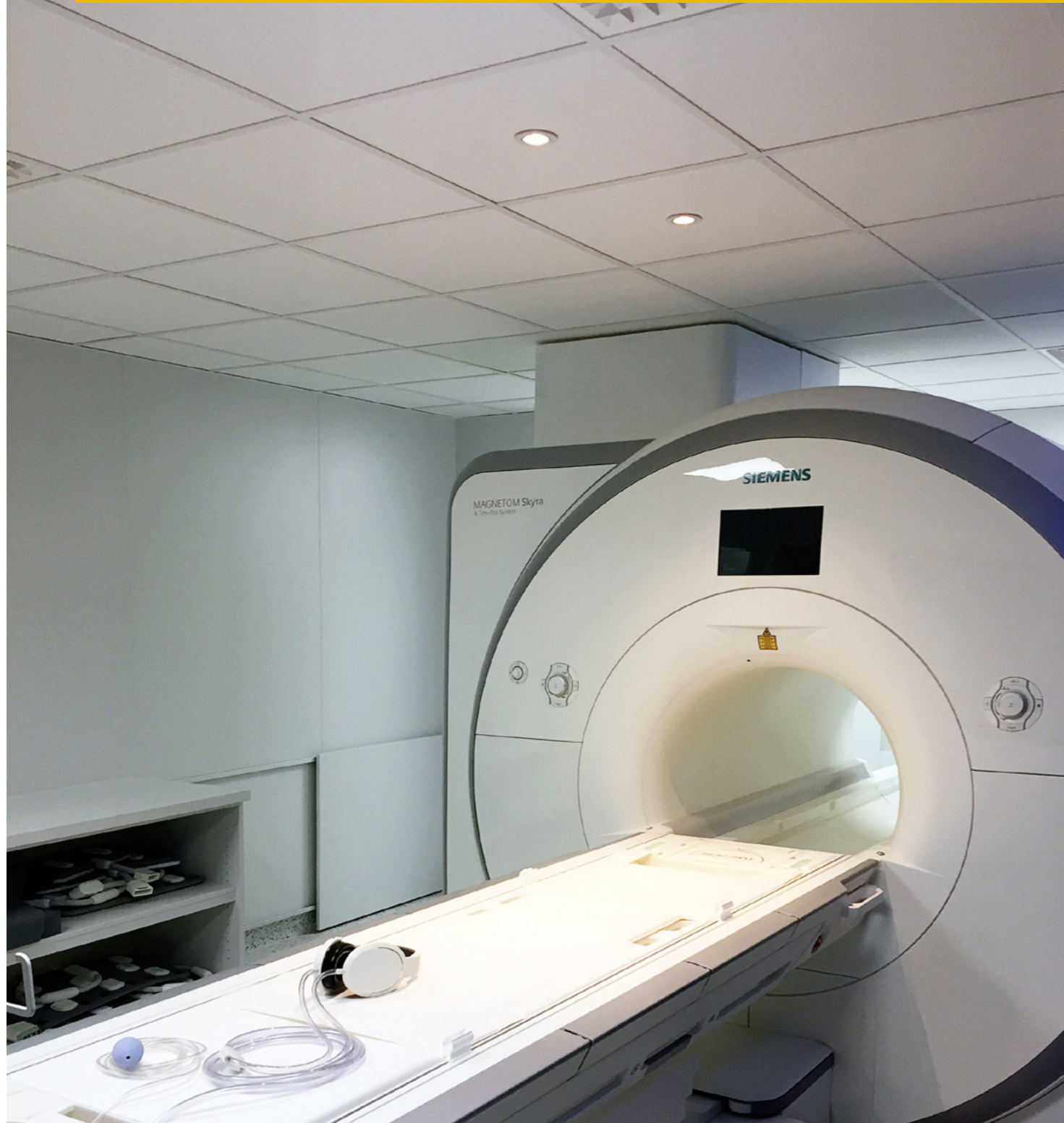


# omniSPOT

Spot-on spotlights



## Next-generation LED lighting systems



## omniSPOT

By using omniSPOT LED recessed spotlights, you can create another light source in the area around the patient couch so staff can concentrate on working on the patient without getting fatigued.

The glare-free omniLUX basic illumination and omniRGB accentuated mood lighting combine to form a harmonious overall lighting design with the addition of omniSPOT LED recessed spotlights. This provides you with optimised work lighting.



# omniRGB

Wall washer using LED technology



## Next-generation LED lighting systems



## omniRGB

Colours influence us subconsciously. At the touch of a button, your Intercabin can be given a completely different appearance. The individual colour scenes can be slowly and harmoniously cross-faded. Using omniRGB, you can describe moods and emotions and provide your patients with positive stimulation, whether with fresh sunshine yellow, cool blue, tropical green or a relaxing red.

There are no limits; any colour spectrum is possible thanks to the LED technology. The individual colours express highly individual moods which are perceived both consciously and subconsciously.

Both the direction from which the light comes and the light intensity are important factors in lighting design.

### You can choose from the following versions:

**Version OR 1:**

omniRGB LED strip, flush-fitted into the ceiling trim

**Version OR 2:**

omniRGB LED strip as indirect illumination between the ceiling and wall cladding

**Version OR 3:**

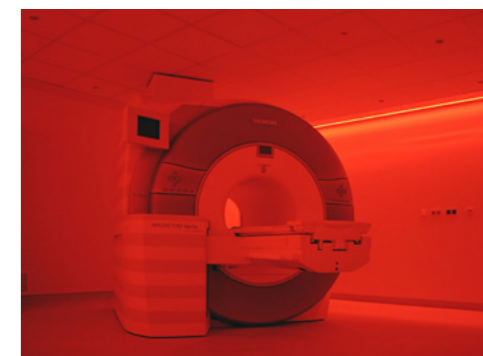
omniRGB panel, grid panels in 600 x 600 mm embedded into the grid ceiling in order to reinforce the colour intensity

**Version OR 4:**

omniRGB LED strip as a design element. Flush-fitted obliquely into the interior design

**Version OR 5:**

omniRGB LED strip as indirect illumination by skirting board



# omniPANEL

Wall washer using LED technology



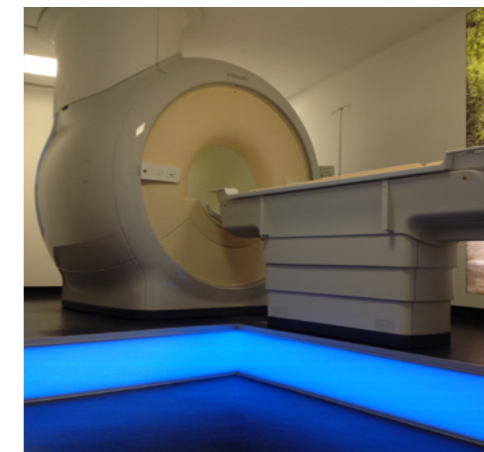
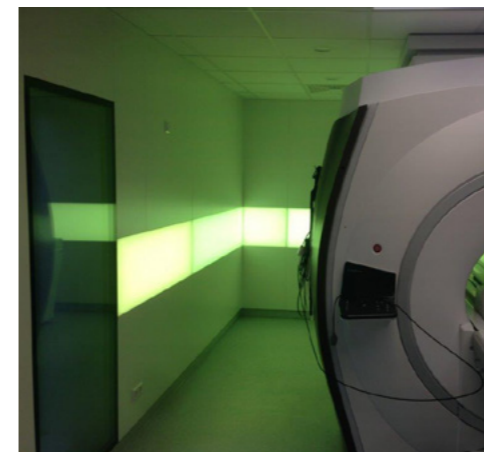
Next-generation LED lighting systems



## omniPANEL

We developed our omniPANEL in order to illuminate your Intercabin even more effectively and to focus even more on the intensity of colour in the room. You can integrate this flush or recessed into our wall system.

There are no standardised, preassembled elements for this purpose. Instead, we collaborate with you to develop your custom design. You could use the ceiling trim all the way around the room or an illuminated platform for your MRI system.





# Patient comfort

omniTV	<b>130</b>
omniPERFORMANCE	<b>132</b>
omniSOUND	<b>134</b>
omniAROMA	<b>136</b>

# omniTV

UHD displays



Technical details

## MRI-compatible screen



## omniTV

We offer an MRI-compatible screen system for clinical use in fMRI (functional magnetic resonance imaging) research or for patient entertainment. Our system can be flush-fitted into the rear or side wall of the Intercabin. We also offer a mobile solution using a mobile baseframe.

Provide your patient with a welcome distraction during the scanning process. This helps to make your working processes more efficient. The patient can relax during the examination and watch videos via a mirror in peace and quiet. This is particularly ideal for distracting children during MRI examinations.

You can also install the system into existing machines; it consists of only three components and merely requires a socket inside the RF cabin (not flush-fitted if retrofitted). Simply contact us, and we will retrofit your omniTV in any RF cabin.

For our system, you will also require an overhead mirror which is not included in the scope of delivery. You can procure this to match your MRI accessories from your system provider.



# omniPERFORMANCE

Projector solution



Video



Design details



Matcon video

Dive into another world



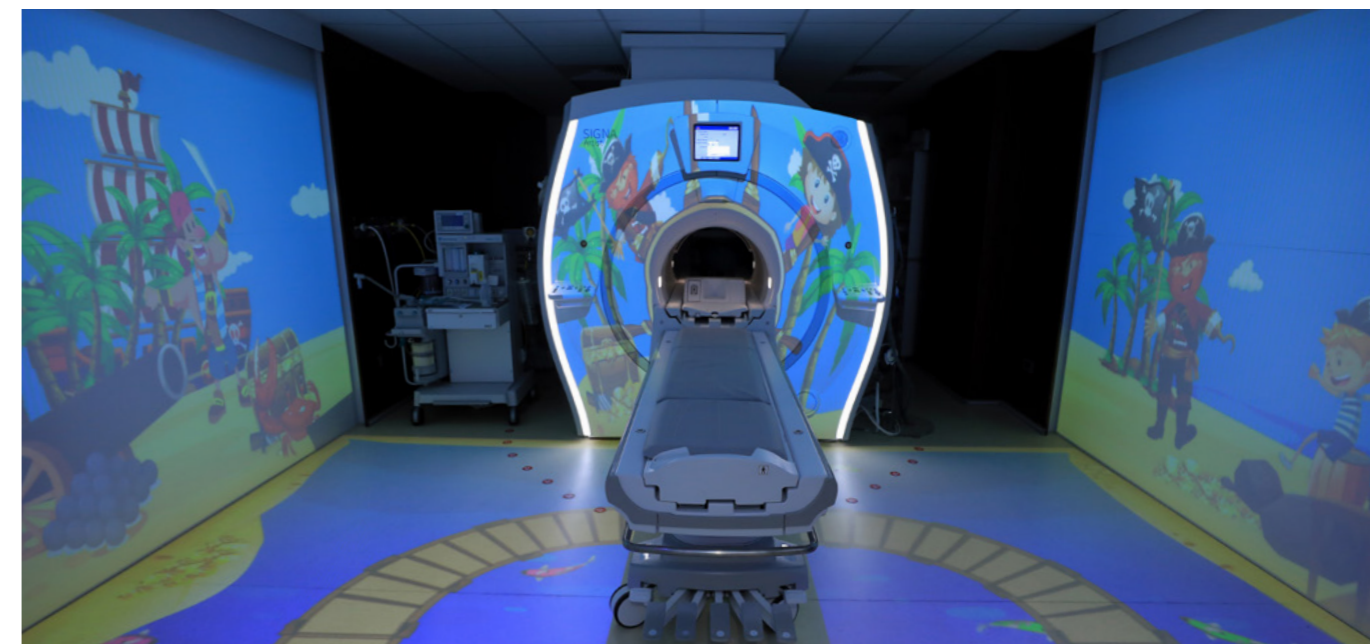
## omniPERFORMANCE

Allow your patient to dive into their own world. Your patient can select different scenes on an iPad. The extended configuration enables you to interconnect several projectors so that images can be shown on different walls in the room.

Children in particular will quickly dive into this fascinating world and forget their fears. The projection is also visible during the scan if used in connection with our omniTV on the rear wall of the Intercabin.

By using high-performance laser projectors, you can repeatedly reinvent the appearance of your Intercabin or the area in front of it. For example, you could feature the different seasons of the year, offering your patients a different design every time.

Our partner for projection design is Matcon from Dubai.



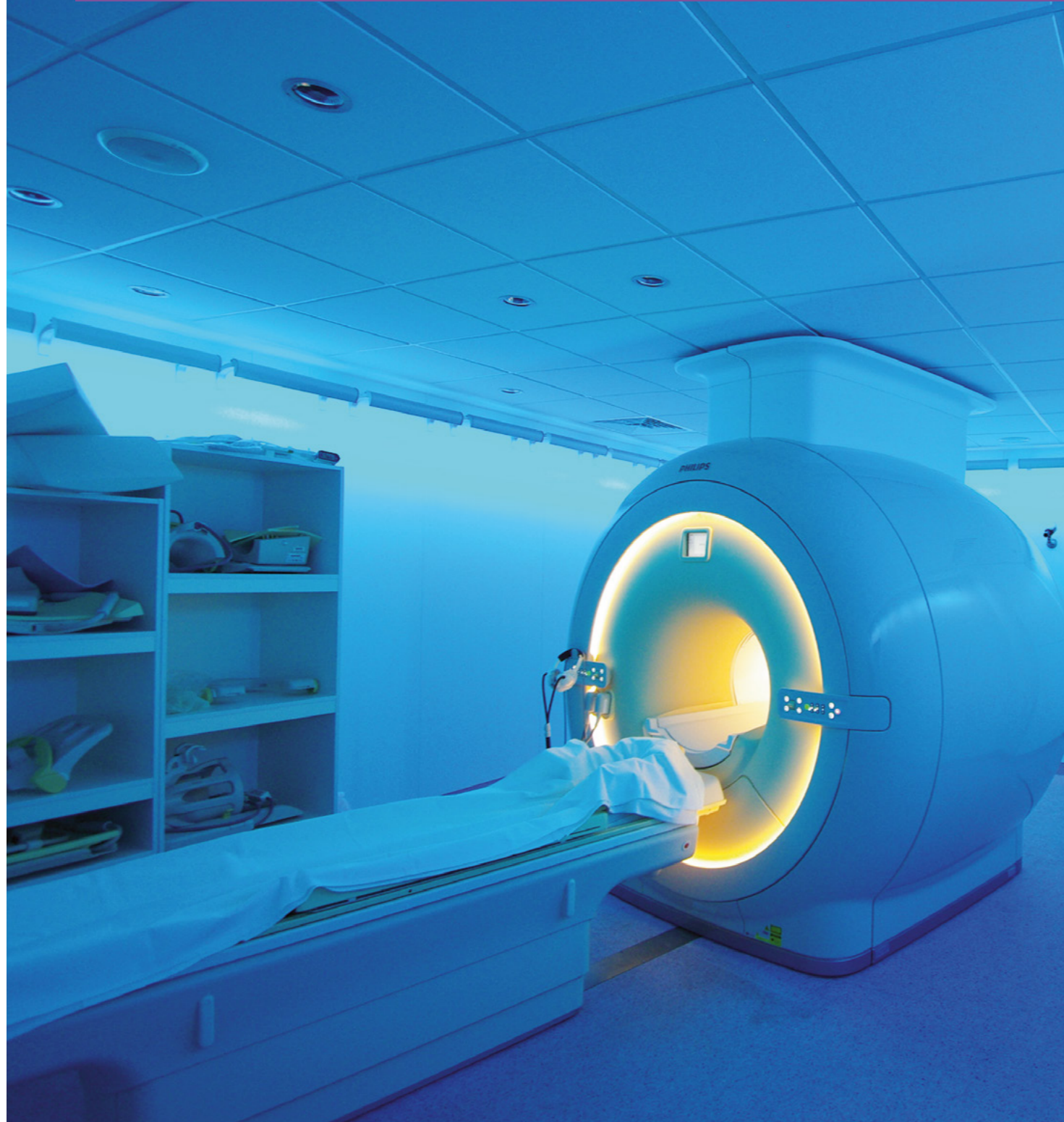
# omniSOUND

Audio solution



Technical details

Dive into another world



## omniSOUND

Subtle music can play a decisive role in creating a pleasant atmosphere. We offer a complete package for playing audio into the room.

Two high-quality, ceiling-mounted loudspeakers in combination with a digital amplifier create an efficient and inexpensive method of playing music in stereo quality in the Intercabin from a range of sources.



# omniAROMA

The fragrance solution



Dive into another world



## omniAROMA

Smells have a unique effect – they can calm, energise or stimulate us, and have a direct effect on our mood. Aromas move via the nose to the brain; the nervous system is stimulated, hormones are released and our feelings are influenced.

Help your patients to relax with scents and make your own work processes easier.



# Storage

moduCAB High End	<b>140</b>
moduCAB Standard	<b>142</b>
moduCAB Custom	<b>144</b>

# moduCAB High End

Coil cabinets, illuminated



High-end modular system



## moduCAB High End

The moduCAB High End is an adaptable, modular cabinet system by Interflex Medizintechnik for storing your coils and other accessories.

The moduCAB High End design is made up of individual modules within a specified grid. The three-module body variations serve to store all RF coils securely and provide visual accents.

All three body versions are illuminated. The ModuCAB High End is available as an integrated or standalone version, for which the ModuCAB High End is supplied with a frame structure.

Current hygiene standards are easily met by the glass fronts.



# moduCAB Standard

Coil cabinets



Design details



Technical details



Configuration

## Modular system



## moduCAB Standard

The moduCAB Standard is an adaptable, modular cabinet system by Interflex Medizintechnik for the storage of your coils and other accessories.

The moduCAB is available in four sizes which are simply calculated in metres. You can equip your moduCAB with hinged or sliding doors and add drawers or trays.

Design your moduCAB just as you require it.





# moduCAB Custom

Tailor-made solutions



Design details

Safely storing MRI coils



## moduCAB Custom

The moduCAB Custom is a cabinet system by Interflex Medizintechnik that is tailored to your specific requirements. Your cabinet system is produced according to your specifications and can be equipped with any features.

Whether you wish to have disposal chutes for waste or large sliding doors – even flush-fitted cabinet systems are possible.



# Add-ons

Contrast media injectors	<b>148</b>
Get Up System	<b>150</b>
KidsplayMRT	<b>152</b>

# Contrast media injectors

Complete set or preparation



Technical details



www.ulrichmedical.de

## Safe RF routing for the injector



## Contrast media injectors

Interflex Medizintechnik offers a device for the laying of injector cables using empty conduits in the side walls of the cabin. In this case, Interflex Medizintechnik also provides the space for additional RF filters in the Interflex filter box.

At Interflex Medizintechnik, we have made the most of our connections in the Ulm regional innovation network, collaborating with ulrich Medical to ensure that all Intercabins are equipped to take ulrich injectors.

### The benefits of using ulrich medical Max 3 injectors for MRI:

#### Quick and simple

- Only need to be set up once per day
- Quick patient changeover
- Intuitive operating concept

#### Economical and efficient

- Low consumable costs
- Optimised contrast media management
- Efficient working processes

#### Hygienic and safe

- Sealed system: direct injection from original media containers
- Automatic patient-side air monitoring
- SafeConnect with contact protection

#### Focused on hygiene and safety

- SafeConnect with contact protection (patient tubing to Easy-Click cassette)
- Verified 24 h use of the Easy-Click cassette
- Reliable protection against retrograde contamination
- Direct injection from the original media containers
- Protection against air injections using patient-side air detector
- Sealed system

Contact Interflex Medizintechnik directly for more information about the injector  
We will forward your contact details on to the manufacturers of the contrast media injector, ulrich GmbH & Co. KG.

# GET UP® System

MRI-compatible holding system



Relieving strain on staff



## GET UP® System

The medical technology experts at febromed have created a swivelling, space-saving GET UP® holding system to facilitate day-to-day work in demanding radiology departments in medical practices and hospitals. The company is well known for specialising in delivery rooms and, when developing this product, was able to capitalise on years of experience in manufacturing equipment for maternity wards.

THE FEBROMED GET UP® is a holding system which can be mounted onto the ceiling. It minimises the risk of patient falls and maximises ergonomic efficiency for staff. Patients can be prepared and accurately positioned for CT or MRI scans without much physical effort.

Limited mobility is relatively common amongst radiology patients and is a challenge for staff. This construction is purely mechanical and assists patients in getting onto the examination table as independently as possible – even from a bed or wheelchair. Staff are always in control of the situation. The system meets the highest standards of hygiene, workmanship and durability.

Contact Interflex Medizintechnik directly for more information about the GET UP® System; we are the Europe-wide installation partner and will forward our purchasing conditions on to you when you purchase an Intercabin.



# KidsplayMRT

Children's games and decor

Children's games and decor made from natural wood for your



## KidsplayMRT

A simple use of play to distract children from fearing the MRI. Give your little patients the opportunity to prepare for their MRI scan through play in the waiting room.

The KidsplayMRT is made from natural wood in our workshops at our Ulm site.

### Technical details

Dimensions approx.: length 1,300 mm x width 1,200 mm x height 1,100 mm

### Tailored solutions available on request:

- Select from 12 colours.
- Sound installation  
(on request, the KidsplayMRT can be made to hum at the touch of a button.)



# Service

Service	<b>156</b>
Site measurements	<b>158</b>
Package solutions	<b>160</b>
Interim solutions	<b>162</b>
Service partner	<b>164</b>
Showroom	<b>166</b>

# Our service packages

Good reasons to go for Interflex Service



Service concept

Long product life



## Our service packages

With its safe and effective RF shielding, the Intercabin plays a major role in the high performance of your MRI system and thus has a direct influence on image quality. You can only demand optimum performance from your product if you have created the right environment for it. Our Intercabin is the first step towards achieving that. The second step is the Interflex service package.

### Door maintenance

The RF door is one of the most important components of the Intercabin, thus contributing towards the homogeneity of the measuring field. Over time, the efficiency of the RF seals on RF doors decreases. This gradual process leads to poorer measuring results. You should prevent this through regular door maintenance.

### Four reasons to carry out RF door maintenance:

1. Reliable scanning sequences
2. Minimising damage
3. Prolonging service life
4. Fixed prices over the contractual period

### Intercabin Service

The Intercabin is used to protect your MRI system, your patients and your employees. As a company conscious of its responsibilities, we recommend that you also carry out regular maintenance on the Intercabin. Contact us regarding our diverse spectrum of services.

# On-site measurements for MRI systems

Services



Service from the start



## On-site measurements for MRI systems

Interflex Medizintechnik offers various metrological surveys.

### B0 measurement

MRI system locations have to be selected carefully. Disruptive influences from magnetic fields may lead to a selected location having to be retrofitted at substantial extra cost in order to protect the MRI system. It may also be the case that the location is completely unsuitable. Trams, elevators, parking and driving vehicles affect the magnetic field. We are able to measure these magnetic influences and use all of the measurement data we obtain to provide you with all the information for the planned MRI system location.

### Vibration measurement

Our vibration measurement service measures building vibrations so we can calculate the required structure-borne noise insulation measures required.

### RF measurement

The Intercabin and all other RF cabins are shielding cabins which have to possess certain shielding properties. For this purpose, system manufacturers provide clearly-defined specifications and compliance with these specifications must be verified after completion. For conversion work, an RF survey must be carried out prior to starting the work in order to determine the exact scope of work required.

We survey all types of RF cabins; simply contact us to find out more.



# Package solutions

Planning and architectural services for radiologists



Consistent implementation of high design standards



## Package solutions

Together with our planning partners, we offer you holistic room design, bringing together functionality and aesthetic design in a harmonious way. On the one hand, your rooms must guarantee smooth processes, and on the other hand your patient should feel comfortable.

We develop your project together with you, irrespective of whether this is a complex conversion or the construction of a whole new practice.

We guarantee you creative ideas, thorough planning and careful execution with all participating tradespeople.



# Interim solution

The mobile MRI solution



medneo

Operate an MRI system in spite of conversion work



## The mobile MRI solution

During building work, we offer you the capacity to continue patient examinations using a mobile MRI solution.

**The advantages of a mobile MRI solution:**

- You can continue operating your system on-site, preventing significant loss of income.
- In spite of conversion work in your own practice or department, patients can still be examined at your location without restrictions

We are able to offer these interim solutions together with our partner medneo. medneo is an innovative company with its headquarters in Berlin, from where it offers radiological operator solutions across Germany and abroad. medneo can supply you with maximum image, service and process quality and lives up to its slogan: "Radiology as a Service."

This service is available across Europe, currently with six high-end mobile MRI units. Whether you require an interim solution due to building works, machine repair or machine replacement – our company and medneo will jointly compile an individual and flexible service package for you. You decide whether you require a mobile MRI solution with or without medical staff provided.



# Service partner

One contact for many tasks

Service spectrum redefined



## Service partner

The service spectrum offered by Interflex Medizintechnik is continually expanding, which is why Interflex Medizintechnik has received an award as Service Provider of the Year.

**We offer the following services:**

- Planning and consultation regarding the location selection for the Intercabin
- Planning and consultation for quench pipe design
- Planning and consultation for iron shielding
- Planning and consultation for lighting concepts and animations
- Planning and consultation for doctors' practices and monitoring of all tradespeople on the project

**As part of our forward-thinking service concept, we also offer the following services:**

- Disposal of the old RF cabin with disposal certificate
- Disposal and scrapping of MRI systems with disposal certification
- Relocation of MRI systems
- Purchase of used MRI systems
- Financing options for Intercabins
- Refurbishment of Intercabins

# Showroom

Real and virtual



Showroom



Contact details



Registration Newsletter

Experience our products



## Interflex Newsletter: "Jaguar Update"

At Interflex Medizintechnik, we have a showroom with adjacent auditorium at our location in Ulm where you can test the different extended configurations of our doors and products. You can also be purposeful in finding targeted information that you need relating to our latest designs and extended configurations. Afterwards, you can view the product lines live and familiarise yourself with the processes.

Of course, you also have the opportunity to obtain information about our Intercabin directly from our clients. This is how to experience our optimised sound insulation in real life.

We send out our Jaguar Update at regular intervals to keep you informed of our latest product developments, trends and special projects. Always stay up to date, because:

**A jaguar is fast, strong, and usually a lot closer than you think.**



# Highlights

Worldwide Premium-Projects



Experience our highlights



## Highlights

Experience an exclusive selection of our premium cabins. Immerse yourself in our high-end projects implemented worldwide.



401



402



403



404



405



406



407



408



409

# Interflex Medizintechnik

International and flexible



www.interflex-um.de

From trades to German medium-sized business



## Closing words

### What you can rely on...

We are proud of our products and we are always developing them further. These products are precisely adapted by our planners to meet construction specifications and are conscientiously implemented by our production team and our fitters.

In addition to outstanding training and many years of experience, our team is characterised by a high level of commitment, speed and flexibility in every phase of the project.

This guarantees you a smooth process and exactly the shielding solution you desire.

Together, we claim to be the best in our industry.

We thank you for placing your trust in us and look forward to our services winning your enthusiasm first hand

Carolin Fiore

Roberto Fiore



Uniqueness redefined.